

PARTS CATALOG
SECTION VIII
INTRODUCTION

1. This parts catalog lists and describes the parts for the type A-10A Aircraft Sextant, manufactured by the Fairchild Camera and Instrument Corporation, Jamaica, New York.
2. The Group Assembly Parts List, Section IX, consists of a breakdown of the complete instrument in subassemblies and detailed parts. Each assembly listed is directly followed by its component parts properly indented to show their relationship to the assembly. The quantities specified are those used at the location shown and not necessarily the total number used per instrument. Refer to the Numerical Parts List, Section X, for the total quantities.
3. The Numerical Parts List, Section X, consists of part numbers in numerical order, exclusive of standard part numbers which are shown in Section XI. The column headed "Group List Page No." refers to pages of the Group Assembly Parts List. The column headed "Total Quantity" indicates total number used per instrument.
4. The Standard Parts List, Section XI, consists of Fairchild, Army Air Forces, and AN standard part numbers in numerical order and total quantities used per instrument.
5. The asterisks (*) denote parts which are not procurable separately. When replacements of parts, indicated by asterisks are found necessary, it is recommended that assemblies of which they are components, should be ordered rather than the individual parts. This is due to the fact that these individual parts can only be fabricated properly, with regard to their relationship to the other parts of the assembly, at the time of manufacture.

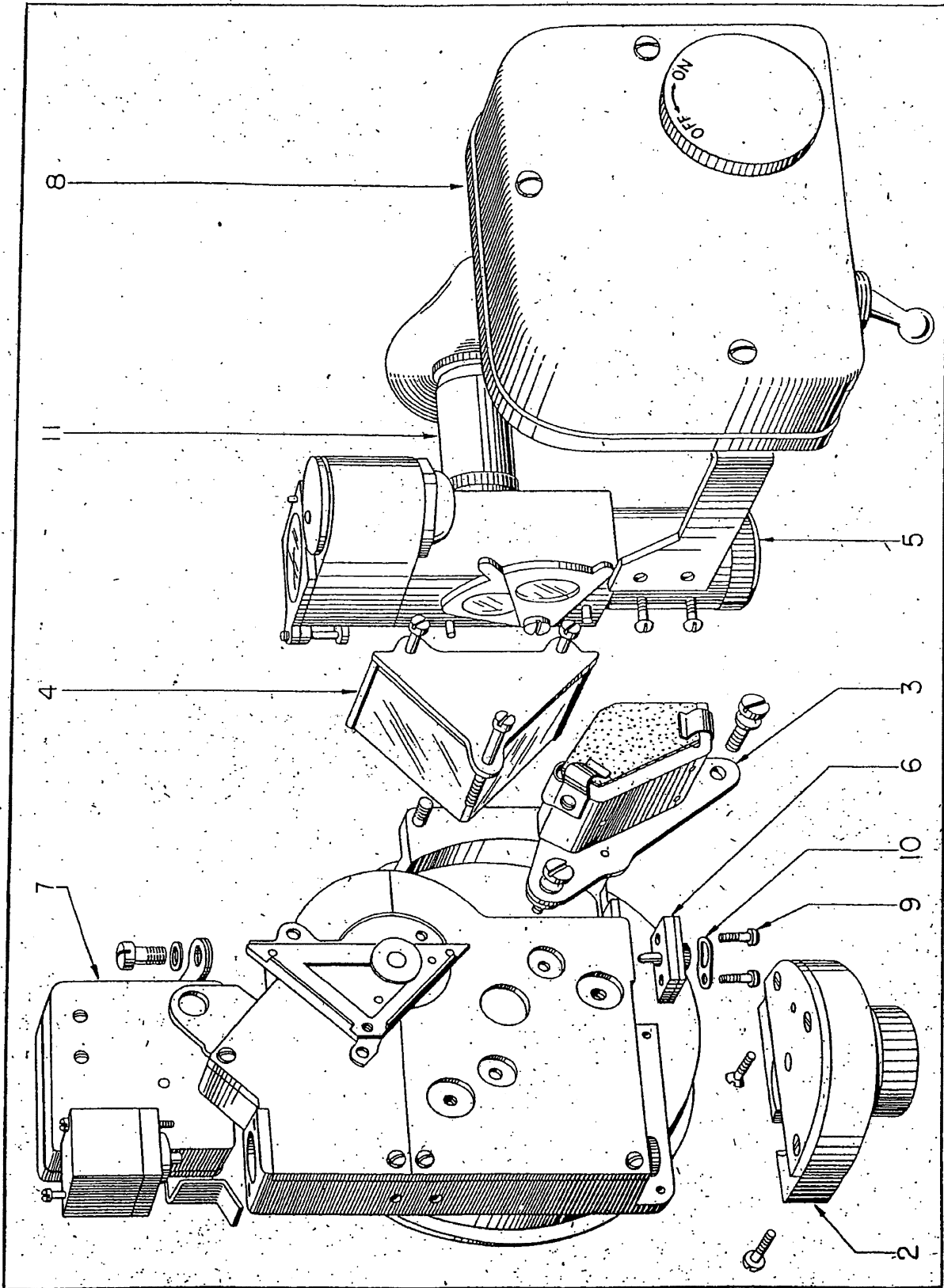


Figure 24—Complete Sextant Assembly

18

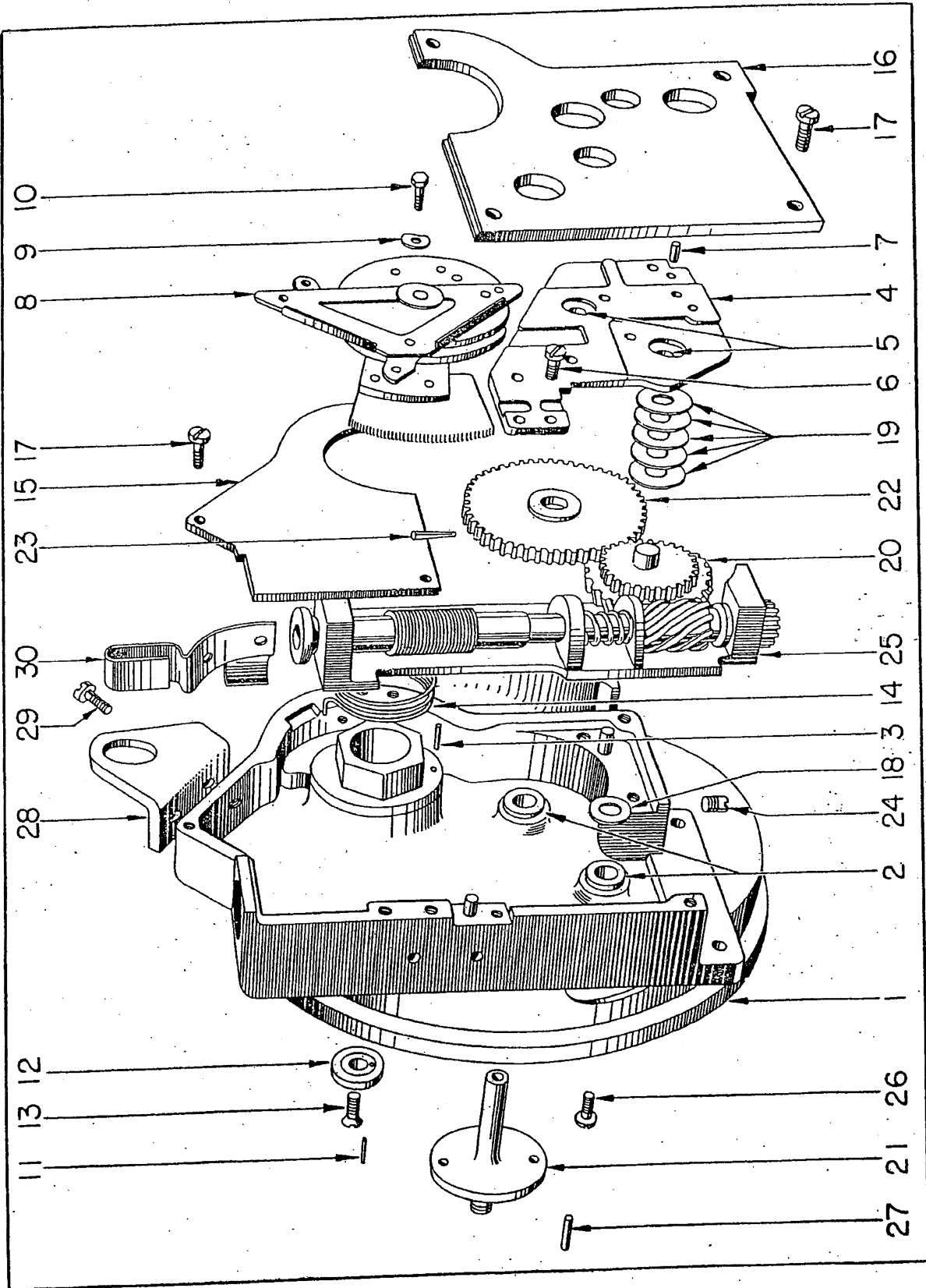


Figure 25—Frame Assembly

RESTRICTED
AN 05-35-33
SECTION IX—GROUP ASSEMBLY PARTS LISTS

FIG. NO.	INDEX NO.	STOCKED	GROUP Aircraft Instrument						UNITS PER ASSY	PROPERTY CLASSIFICATION		
			MAJOR ASSEMBLY Type A-10A Aircraft Sextant							U.S. NAVY	U.S. ARMY	BRITISH
			PART NUMBER	1	2	3	4	5				
26	3		F76-60-7						Pin - Taper No. 6/0 x 7/16 long	1	05-E	106BB
26	4		F76-60-5						Pin - Taper No. 6/0 x 5/16 long	1	05-E	106BB
26	5		B320-819						Stop - Drive gear	1	05-E	106BB
26	6		B320-K53						Cover Assembly - Drive	1	05-E	106BB
			* B320-491						Cover - Drive	1	05-E	106BB
			* B320-825						Stud	1	05-E	106BB
			* B320-820						Gear - Differential stop	1	05-E	106BB
26	7		F79-3-6						Pin - Dowel steel No. 3-32 x 3/16 long	2	05-E	106BB
26	8		AN505-2-3						Screw - Flathead cad. plate No. 2-56 x 3/16 long	3	29	128
26	9		AN505-6-8						Screw - Flathead cold rolled steel cad. plate No. 6-32 x 1/2 long	1	29	128
26	10		F13-68RC						Screw - Binding head cold rolled steel cad. plate black No. 6-32 x 1/2 long	1	05-E	106BB
24	3		B320-C24						Prism Assembly - Fixed	1	05-E	106BB
			B320-C38						Dowel Assembly - Fixed prism holder	1	05-E	106BB
27	1		D320-451						Holder - Fixed prism	1	05-E	106BB
27	2		F79-3-10						Pin - Dowel 3/32 dia. x 5/16 long	2	05-E	106BB
27	3		B320-18						Plate - Adjusting fixed prism	1	05-E	106BB
27	4		B320-21						Packing - Fixed prism	4	05-E	106BB
27	5		B320-22						Packing - Fixed prism	1	05-E	106BB
27	6		B320-5						Prism - Fixed	1	05-E	106BB
			* B320-511						Blank - Fixed prism	1	05-E	106BB
			B320-C42						Clamp Assembly - Fixed prism (lower)	1	05-E	106BB
27	7		B320-587						Clamp - Fixed prism (lower)	1	05-E	106BB
27	8		B320-593						Cork - Prism clamp	3	05-E	106BB
			B320-C43						Clamp Assembly - Fixed prism (upper)	1	05-E	106BB
27	9		B320-351						Clamp - Fixed prism (upper)	1	05-E	106BB
27	8		B320-593						Cork - Prism clamp	2	05-E	106BB
27	10		F22-F62						Screw - Allen (socket head) headless set No. 6-32 x 1/8 long	3	05-E	106BB
27	11		F13-22RC						Screw - Binding head cold rolled steel cad. plate 2-56 x 1/8 long	3	05-E	106BB
27	12		B320-107						Screw - Fixed prism mounting	2	05-E	106BB
24	4		B320-6						Prism - Field	1	05-E	106BB
27	13		B320-512						Blank - Field prism	1	05-E	106BB
27	15		B320-605						Cushion - Prism	2	05-E	106BB
			A320-K99						Shield Assembly	1	05-E	106BB
27	16		B320-493						Cork	2	05-E	106BB
27	14		B320-473						Shield - Field prism	1	05-E	106BB

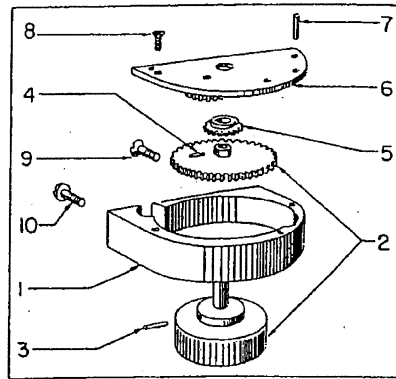


Figure 26—Drive Assembly

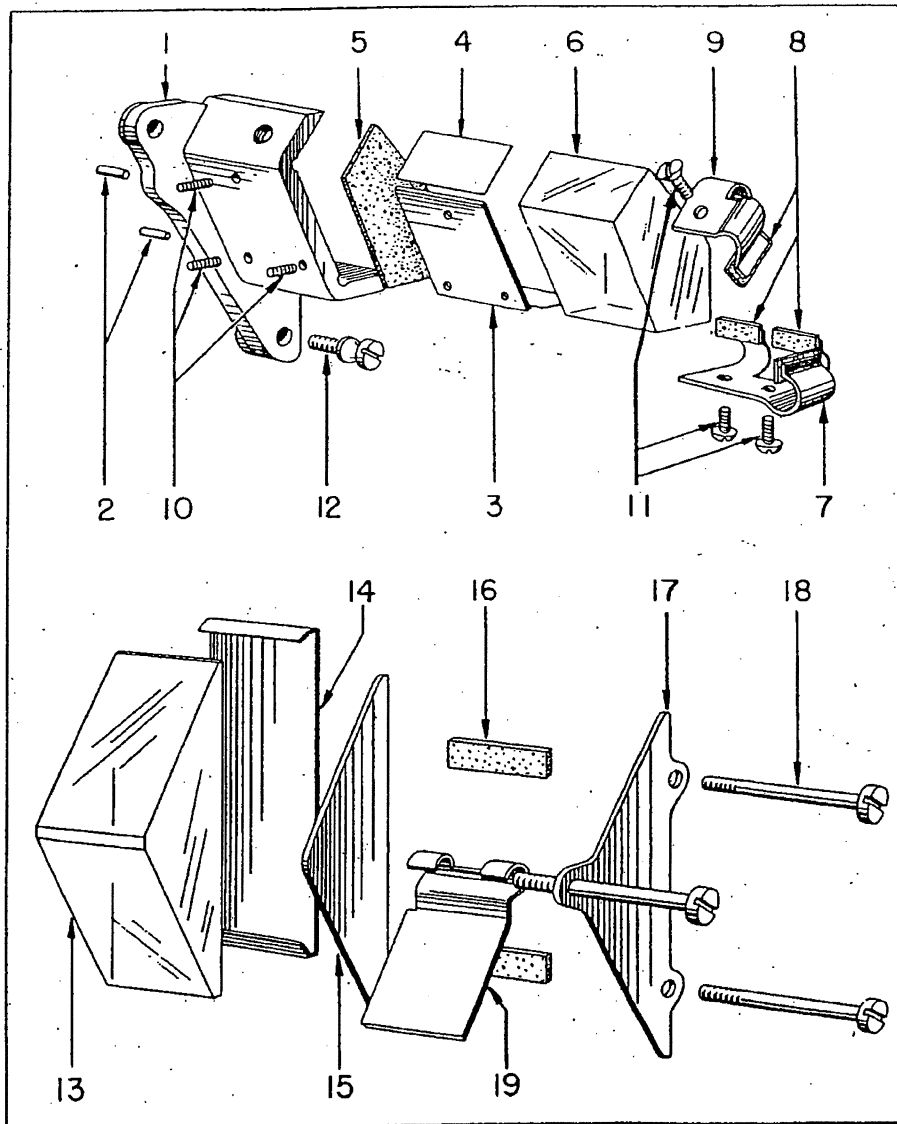


Figure 27—Fixed and Field Prism Assemblies

RESTRICTED
AN 05-35-33
SECTION IX--GROUP ASSEMBLY PARTS LISTS

FIG. NO.	INDEX NO.	GROUP	Aircraft Instrument						UNITS PER ASSY	PROPERTY CLASSIFICATION		
			MAJOR ASSEMBLY Type A-10A Aircraft Sextant							U.S. NAVY	U.S. ARMY	BRITISH
			PART NUMBER	1	2	3	4	5				
27	17	C320-472							1		05-E	106BB
27	18	B320-474							3		05-E	106BB
27	19	B320-494							1		05-E	106BB
25	15	B320-457							1		05-E	106BB
25	16	B320-456							1		05-E	106BB
25	17	500-4-4							7		29	128
25	18	B320-517							1		05-E	106BB
25	19	B320-518-1							1		05-E	106BB
25	19	B320-518-2							1		05-E	106BB
25	19	B320-518-3							1		05-E	106BB
25	19	B320-518-4							1		05-E	106BB
25	19	B320-518-5							1		05-E	106BB
25	19	B320-518-6							1		05-E	106BB
25	20	B320-C12							1		05-E	106BB
		* C320-516							1		05-E	106BB
		* B320-460							1		05-E	106BB
		B320-C13							1		05-E	106BB
25	21	* B320-469							1		05-E	106BB
25	22	* B320-463							1		05-E	106BB
25	23	F76-60-5							1		05-E	106BB
25	24	B320-560							1		05-E	106BB
29	1	B320-464							1		05-E	106BB
29	2	B320-497							2		05-E	106BB
		B320-C14							1		05-E	106BB
29	3	B320-468							1		05-E	106BB
29	4	B320-467							1		05-E	106BB
29	5	B320-466							2		05-E	106BB
29	6	B320-465							1		05-E	106BB
		B320-A17							1		05-E	106BB
29	7	C320-345							1		05-E	106BB
29	8	B320-A28							1		05-E	106BB
		* B420-117							1		05-E	106BB
		* B320-119							1		05-E	106BB
29	9	F22-C43P							1		05-E	106BB
29	10	B320-64							2		05-E	106BB
25	25	B320-K7							1		05-E	106BB
		* B320-129							1		05-E	106BB
		* B320-128							1		05-E	106BB
		* B320-43							1		05-E	106BB
		* B320-572							1		05-E	106BB
		* B320-44							1		05-E	106BB
		* A193-930							1		05-E	106BB
		* B320-A33							1		05-E	106BB
		* C320-102							1		05-E	106BB
		* B320-115							1		05-E	106BB

Revised 25 July 1945

RESTRICTED

27

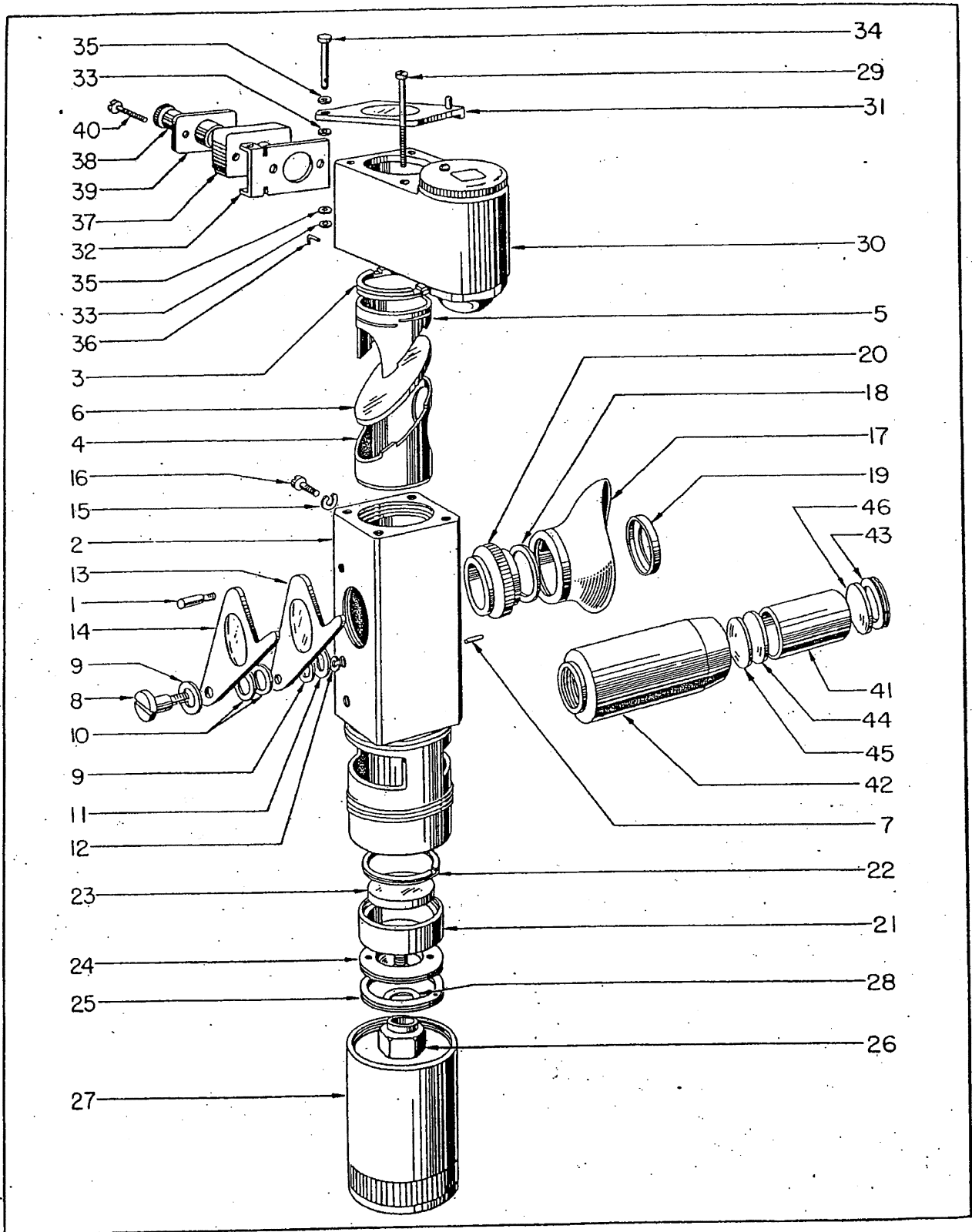


Figure 28—Glass Chamber Housing and Related Assemblies

RESTRICTED
AN 05-35-33

SECTION II—GROUP ASSEMBLY PARTS LISTS

FIG. NO.	INDEX NO.	STOCKED	GROUP Aircraft Instrument						UNITS PER ASSY	PROPERTY CLASSIFICATION		
			MAJOR ASSEMBLY Type A-10A Aircraft Sextant							U.S. NAVY	U.S. ARMY	BRITISH
			PART NUMBER	1	2	3	4	5				
28	27		B320-407						1		05-E	106BB
28	28		A193-1121-1						1		05-E	106BB
28	29		B320-551						4		05-E	106BB
25	28		B320-500						1		05-E	106BB
25	29		500-4-3									
			B320-904						2		29	128
			AN535-0-2						1		05-E	106BB
			B320-46						1			
			D320-K5						4		29	128
28	30								-		05-E	106BB
			* D320-645						1		05-E	106BB
			* B320-868						1		05-E	106BB
			* B320-634						2		05-E	106BB
			* B320-637						1		05-E	106BB
			* B320-638						2		05-E	106BB
			* B320-639						1		05-E	106BB
			* B320-710						1		05-E	106BB
			* B320-704						1		05-E	106BB
			* B320-705						1		05-E	106BB
			* B320-707						1		05-E	106BB
			* B320-706						1		05-E	106BB
			* B320-703						1		05-E	106BB
			* C320-644						1		05-E	106BB
			* B320-11						2		05-E	106BB
			* B320-12						2		05-E	106BB
			* B320-13						1		05-E	106BB
			* B320-515						1		05-E	106BB
			* B320-14						1		05-E	106BB
			* B320-15						1		05-E	106BB
			* B320-515						1		05-E	106BB
			* B320-374						1		05-E	106BB
			* B320-376						1		05-E	106BB
			* B320-726						2		05-E	106BB
			* B320-420						1		05-E	106BB
			B320-C22						1		05-E	106BB
28	31		* B320-C17						1		05-E	106BB
			* B320-487						1		05-E	106BB
			* B320-488						1		05-E	106BB
28	32		B320-486						1		05-E	106BB
28	33		B320-482						2		05-E	106BB
28	34		B320-485						1		05-E	106BB
28	35		B320-483						2		05-E	106BB
28	36		B320-484						1		05-E	106BB
28	37		B320-455						1		05-E	106BB
			B320-334						1		05-E	106BB
			D320-K77						1		05-E	106BB

RESTRICTED
AN 05-35-33

SECTION IX—GROUP ASSEMBLY PARTS LISTS

FIG. NO.	INDEX NO.	STOCKED	GROUP Aircraft Instrument						UNITS PER ASSY	PROPERTY CLASSIFICATION		
			MAJOR ASSEMBLY		Type A-10A Aircraft Sextant					U.S. NAVY	U.S. ARMY	BRITISH
			PART NUMBER	1	2	3	4	5				
28	39		B320-K90						Socket Assembly - Bubble light	1	05-E	106BB
			* B320-D8						Plate Assembly - Plug and Plate - Lamp socket	1	05-E	106BB
			* B320-333						Plug - Pilot light	1	05-E	106BB
			* B320-557						Spacer - Pilot light	1	05-E	106BB
			* B320-337						socket insulating	1	05-E	106BB
			* B320-940						Terminal - Pilot light	1	05-E	106BB
			* B320-559						Bushing - Pilot light	1	05-E	106BB
			* B320-558						Washer - Pilot light	1	05-E	106BB
			B320-995						Wire - Surco American (brown)	1	05-E	106BB
			F73-11A						Sleeving - XTE-30 (.095 ID) black 3/4 inch	1	05-E	106BB
			B320-K91						Connector Assembly	1	05-E	106BB
24	6		B320-133						Socket - Bubble chamber light	1	05-E	106BB
			B320-995						Wire - Surco American (white)	1	05-E	106BB
			F73-11A						Sleeving - XTE-30 (.095 ID) black 3/4 inch	1	05-E	106BB
24	7		C320-K56						Marker Assembly - Complete automatic	1	05-E	106BB
29	11		C320-K64						Housing Assembly - Automatic marker	1	05-E	106BB
			* C320-900						Housing - Automatic marker	1	05-E	106BB
			* B320-K57						Socket Assembly - Pilot light	1	05-E	106BB
			* B320-K63						Bracket Assembly - Plug	1	05-E	106BB
			* C320-885						Bracket - Angle	1	05-E	106BB
			* B320-557						Plug - Pilot light	1	05-E	106BB
			* B320-558						Washer - Pilot light	1	05-E	106BB
			* B320-337						Spacer - Pilot light socket insulating	1	05-E	106BB
			* B320-940						Terminal - Pilot light	1	05-E	106BB
			* B320-559						Bushing - Pilot light	1	05-E	106BB
			F68K-22						Rivet - Countersunk head brass .062 dia. x .125 long	1	05-E	106BB
			F68K-22-1/2						Rivet - Countersunk head brass .062 dia x .156 long	1	05-E	106BB
29	12		C320-899						Guide - Light	1	05-E	106BB
29	13		F7-23RC						Screw - Roundhead cold rolled steel cad. plated No. 2-56 x 3/16 long	2	05-E	106BB

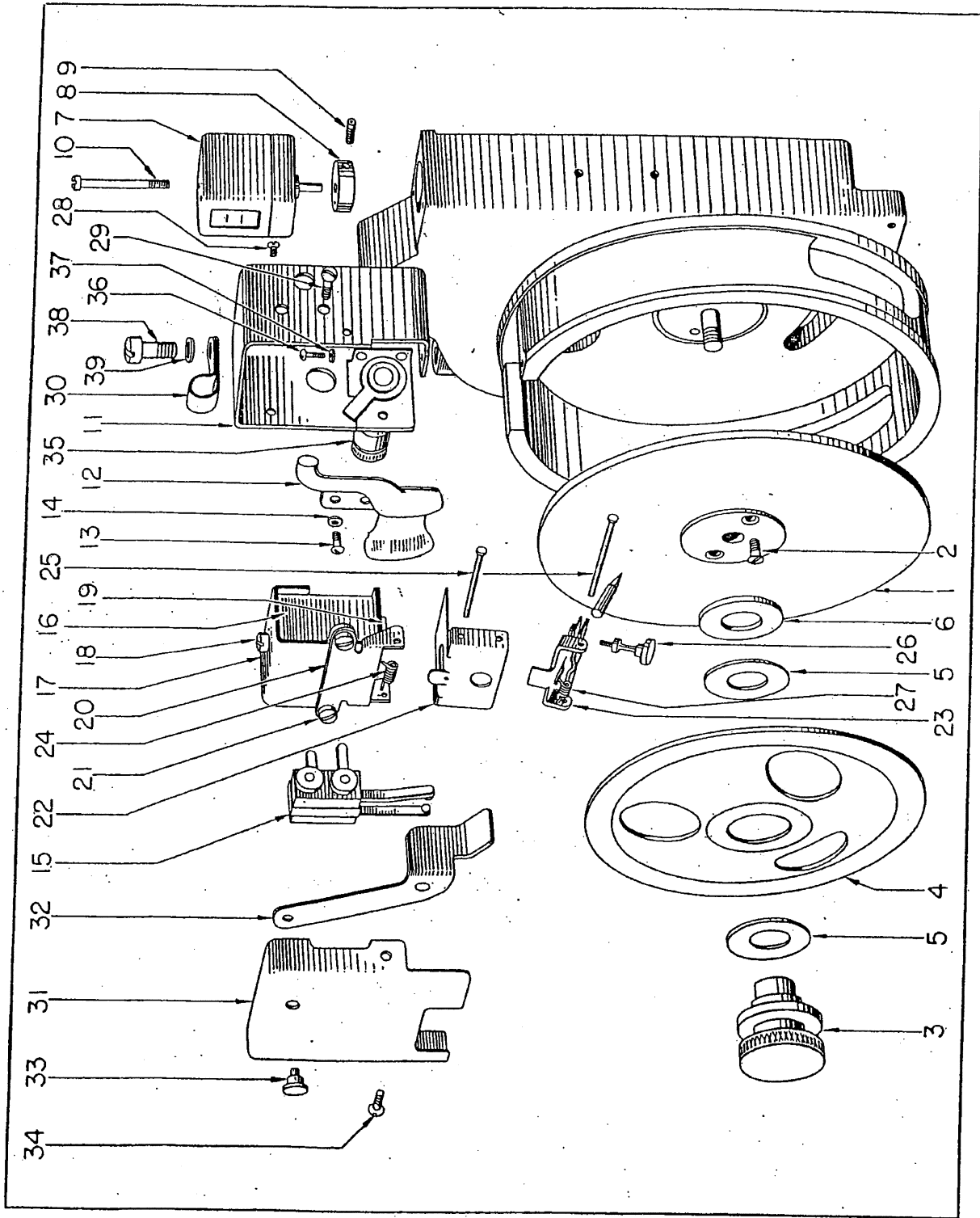


Figure 29—Marker and Recording Disc Assemblies

SECTION IX—GROUP ASSEMBLY PARTS LISTS

FIG. NO.	INDEX NO.	SYMBOL CODE	GROUP Aircraft Instrument						UNITS PER ASSY	PROPERTY CLASSIFICATION				
			MAJOR ASSEMBLY		Type A-10A Aircraft Sextant					U.S. NAVY	U.S. ARMY	BRITISH		
			PART NUMBER	1	2	3	4	5					6	NOMENCLATURE
29	14		AN935-2						Washer	- Lock No. 2	2		29	128
29	15		B320-K59						Switch	Assembly	1		05-E	106BB
			* B320-913							Eyelet - Switch	2		05-E	106BB
			* B320-911							Block - Switch	1		05-E	106BB
			* B320-914							Tube - Insulator	-2		05-E	106BB
			* F95A-2							Spacer - Insulator	1		05-E	106BB
			* B320-896							Insulator - Contact blade	1		05-E	106BB
			* B320-K60							Blade Assembly - Contact	1		05-E	106BB
			* B320-897							Blade - Contact	1		05-E	106BB
			* F86-4RW							Contact - Round-head welded	1		05-E	106BB
			* B320-909							Spring - Switch	1		05-E	106BB
			* F95A-8							Spacer - Insulator	1		05-E	106BB
			* B320-K61							Blade Assembly - Contact	1		05-E	106BB
			* B320-898							Blade - Contact	1		05-E	106BB
			* F86-4RW							Contact - Round-head welded	1		05-E	106BB
			* F95A-2							Spacer - Insulator	1		05-E	106BB
			* F95B-2							Spacer - Retainer	1		05-E	106BB
			C320-K65						Marker	Assembly - Automatic	1		05-E	106BB
			F49-18							Solenoid - Automatic marker	1		05-E	106BB
29	16		B320-K95							Spool Assembly - Solenoid	1		05-E	106BB
			B320-1033							Washer - Solenoid	1		05-E	106BB
			* B320-1014							Spool - Molded	1		05-E	106BB
			B320-1039							Lead - Flexible	1		05-E	106BB
			* B132-329							Cord - Electrical tying 5 feet	1		05-E	106BB
			B320-1041							Tape - Clear cellulose adhesive 3/4 x 2-1/2 long	1		05-E	106BB
			* F88-20ET							Tubing - Green 1-7/8 inch	1		05-E	106BB
			* F88-20AT							Tubing - Black 1-7/8 inch	1		05-E	106BB
			B320-1042							Straightener - Coil	1		05-E	106BB
			* F85-28F							Wire - Standard single Formex No.28 Awg.32 oz	1		05-E	106BB
29	17		B320-1016							Piece - Field	1		05-E	106BB
29	18		B320-1022							Screw	1		05-E	106BB
			AN935-4							Washer - Lock No. 4 regular series	1		29	128
29	19		B320-1013							Core - Coil	1		05-E	106BB
29	20		B320-1015							Bracket - Armature hinge	1		05-E	106BB
29	21		AN515-23							Screw - Roundhead No. 2 x 3/16 long	2		29	128

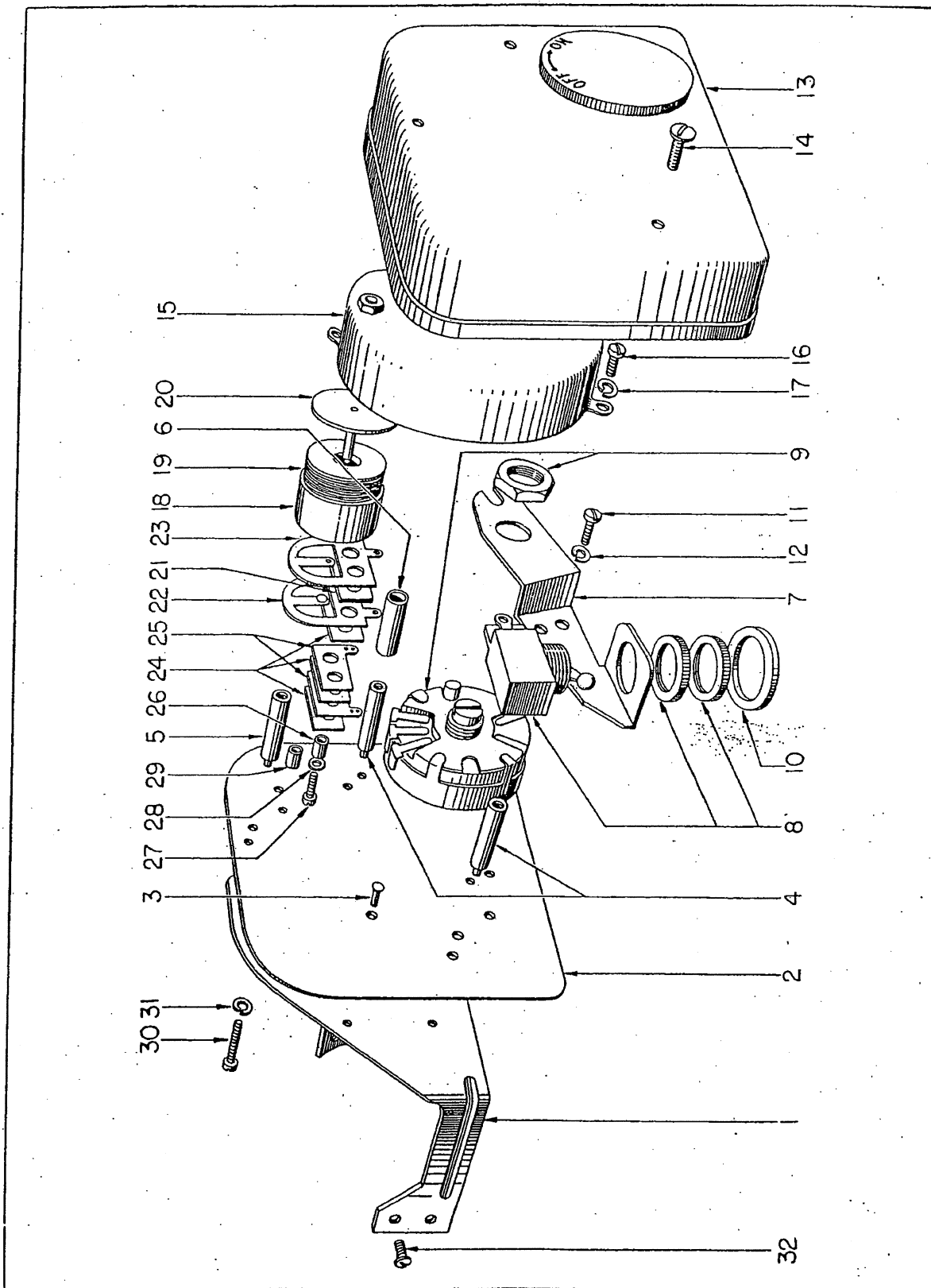


Figure 30—Timer Assembly

RESTRICTED
AN 05-35-33
SECTION IX.—GROUP ASSEMBLY PARTS LISTS

FIG. NO.	INDEX NO.	STOCKED	GROUP Aircraft Instrument						UNITS PER ASSY	PROPERTY CLASSIFICATION		
			MAJOR ASSEMBLY Type A-10A Aircraft Sextant							U.S. NAVY	U.S. ARMY	BRITISH
			PART NUMBER	1	2	3	4	5				
30	4		B320-945						2		05-E	106BB
30	5		B320-983						1		05-E	106BB
30	6		F73-4A									
			C320-K75						1		05-E	106BB
			# B320-1049						1		05-E	106BB
30	7		B320-956						1		05-E	106BB
30	8		F39-33						1		05-E	106BB
			B320-997						1		05-E	106BB
30	9		B320-955						1		05-E	106BB
30	10		B320-954						1		05-E	106BB
30	11		500-5-4						2			128
									2		29	128
30	12		AN935-4L						1		05-E	106BB
30	13		B320-K78						1		05-E	106BB
			* B320-948						1		05-E	106BB
			* B320-953						1		05-E	106BB
			* B320-946						1		05-E	106BB
			* B320-1064						1		05-E	106BB
			* B320-1065						1		05-E	106BB
			* B320-947						1		05-E	106BB
			# B320-1051						1		05-E	106BB
			# B320-1050						1		05-E	106BB
			F13-43RC						3		05-E	106BB
30	15		D320-979						1		05-E	106BB
30	16		F6-32RC						2		05-E	106BB
									2		29	128
30	17		AN935-4L						1		05-E	106BB
			C320-K97						1		05-E	106BB
			# B320-K98						1		05-E	106BB
			# B320-1048						1		05-E	106BB
			# B150-87						2		05-E	106BB
			# B320-1047						1		05-E	106BB
			# C320-K84						1		05-E	106BB
			* B320-984						2		05-E	106BB
			* C320-K93						1		05-E	106BB
30	18		* B320-961						1		05-E	106BB
30	19		* C320-K87						1		05-E	106BB
			* B320-985						1		05-E	106BB
			F85-34F						1		05-E	106BB
			F88-20ET						1		05-E	106BB
			B132-329						1		05-E	106BB
			B320-1048						1		05-E	106BB
			# Indicates parts used with push button switch only.									

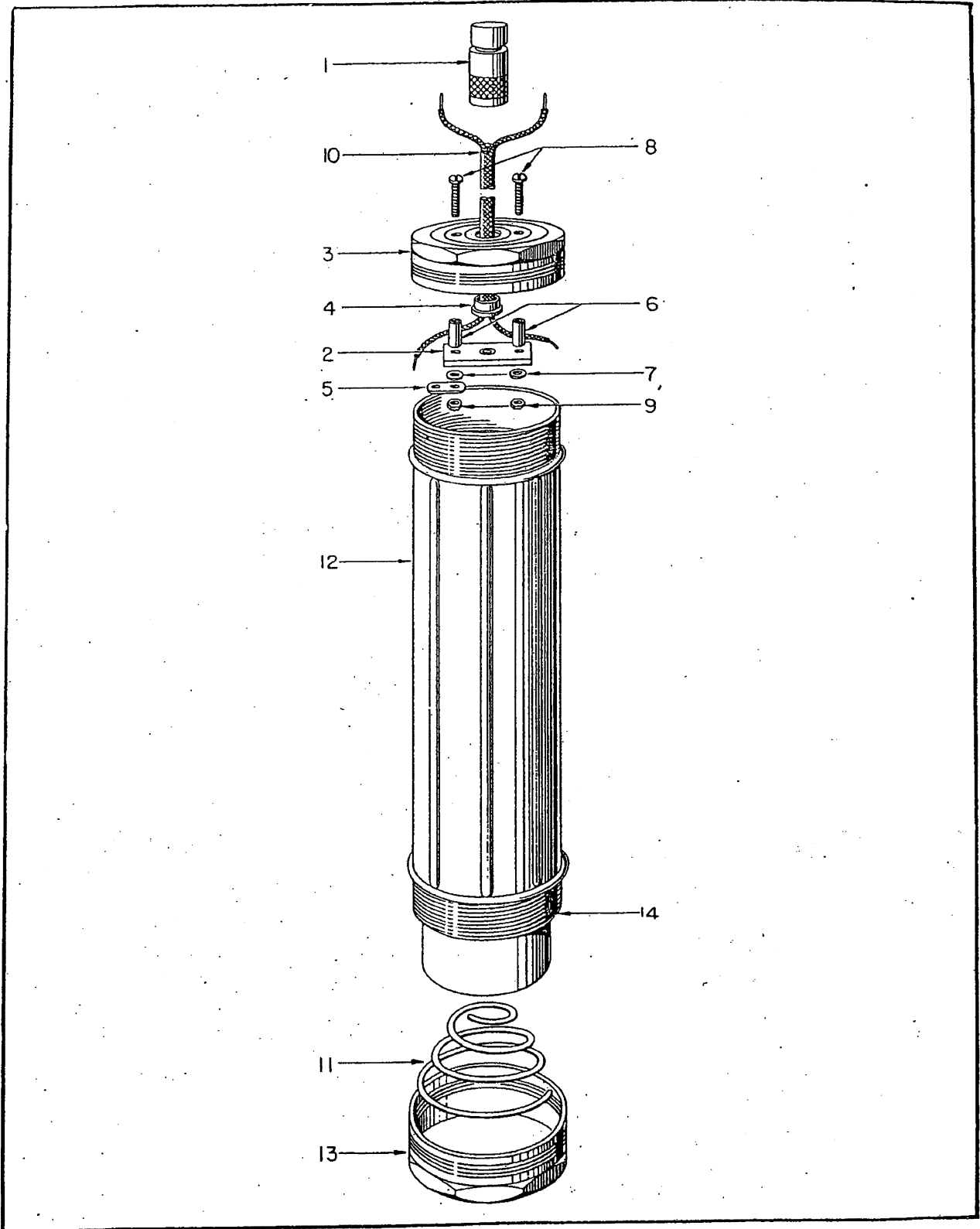


Figure 31—Battery Case Assembly

SECTION X—NUMERICAL PARTS LIST

PART NUMBER	GROUP LIST PAGE NUMBERS	TOTAL QUANTITY	PART NUMBER	GROUP LIST PAGE NUMBERS	TOTAL QUANTITY	PART NUMBER	GROUP LIST PAGE NUMBERS	TOTAL QUANTITY
A193-1121-1	30	1	B320-Q6	39	1	B320-435	39	1
A193-658	29	2	B320-1012	35	1	B320-44	27	1
A193-930	27,29	2	B320-1013	33	1	B320-455	30	1
A242-26	29	1	B320-1014	33	1	B320-456	27	1
A320-K99	25	1	B320-1015	33	1	B320-457	27	1
B132-329	33,36 & 37	2	B320-1016	33	1	B320-46	30	-
B150-87	36	2	B320-1020	37	1	B320-460	27	1
B303-22	39	1	B320-1022	33	1	B320-461	23	2
B320-A17	27	1	B320-1025	39	1	B320-462	23	2
B320-A28	27	1	B320-1026	37	1	B320-463	27	1
B320-A33	27	1	B320-1027	37	1	B320-464	27	1
B320-C12	27	1	B320-1030	35	1	B320-465	27	1
B320-C13	27	1	B320-1033	33	1	B320-466	27	2
B320-C14	27	1	B320-1034	39	1	B320-467	27	11
B320-C17	30	1	B320-1035	39	1	B320-468	27	1
B320-C19	23	1	B320-1036	39	1	B320-469	27	1
B320-C22	30	1	B320-1039	33	1	B320-473	25	1
B320-C24	25	1	B320-104	36	1	B320-474	27	3
B320-C38	25	1	B320-1040	39	1	B320-475	23	1
B320-C42	25	1	B320-1041	33	1	B320-476	23	1
B320-C43	25	1	B320-1042	33	1	B320-477	23	1
B320-C8	39	1	B320-1046	36	1	B320-478	23	1
B320-D2	29	1	B320-1047	36	1	B320-479	23	1
B320-D3	29	1	B320-1048	36	1	B320-480	23	1
B320-D8	31	1	B320-1049	36	1	B320-481	23	1
B320-G2	39	1	B320-1050	36	1	B320-482	30	3
B320-G3	39	1	B320-1051	36	1	B320-483	30	3
B320-J1	39	1	B320-1064	39	1	B320-484	30	1
B320-K10	39	1	B320-1065	39	1	B320-485	30	1
B320-K2	29	1	B320-107	25	2	B320-486	30	1
B320-K3	29	1	B320-11	30	2	B320-487	30	1
B320-K50	23	1	B320-115	27	1	B320-488	30	1
B320-K51	23	1	B320-117	27	1	B320-490	23	3
B320-K52	23	1	B320-118	29	1	B320-491	25	1
B320-K53	25	1	B320-119	27	1	B320-493	25	2
B320-K57	31	1	B320-12	30	2	B320-494	27	1
B320-59	33	1	B320-125	29	1	B320-497	27	2
B320-K6	29	1	B320-128	27	1	B320-5	25	1
B320-K60	33	1	B320-129	27	1	B320-500	30	1
B320-K61	33	1	B320-13	30	1	B320-501	23	1
B320-K63	31	1	B320-133	31	1	B320-504	29	1
B320-K66	35	1	B320-14	30	2	B320-505	29	1
B320-K67	35	1	B320-15	30	1	B320-509	29	1
B320-K7	27	1	B320-18	25	1	B320-511	25	1
B320-K73	35	1	B320-21	25	4	B320-512	25	1
B320-K76	36	1	B320-22	25	1	B320-515	30	2
B320-K78	37	1	B320-333	31	1	B320-517	27	1
B320-K8	29	1	B320-337	31	2	B320-518-1	27	1
B320-K86	37	1	B320-351	25	1	B320-518-2	27	1
B320-K90	31	1	B320-358	29	1	B320-518-3	27	1
B320-K91	31	1	B320-374	30	1	B320-518-4	27	1
B320-K94	37	1	B320-376	30	1	B320-518-5	27	1
B320-K95	33	1	B320-407	30	1	B320-518-6	27	1
B320-K96	37	1	B320-420	30	1	B320-524	29	1
B320-K98	36	1	B320-424	39	1	B320-525	29	1
B320-Q3	39	1	B320-43	27	1	B320-531	29	1
B320-Q5	39	1	B320-433	39	1	B320-532	29	1
			B320-434	39	1			

RESTRICTED
AN 05-35-33
SECTION X — NUMERICAL PARTS LIST

PART NUMBER	GROUP LIST PAGE NUMBERS	TOTAL QUANTITY	PART NUMBER	GROUP LIST PAGE NUMBERS	TOTAL QUANTITY	PART NUMBER	GROUP LIST PAGE NUMBERS	TOTAL QUANTITY
B320-539	29	1	B320-819	25	1	B920-982	37	2
B320-544	39	3	B320-820	25	1	B320-983	36	2
B320-549	39	1	B320-821	23	1	B320-984	36	2
B320-550	39	1	B320-822	23	1	B320-985	36	1
B320-551	30	4	B320-823	23	1	B320-986	37	2
B320-554	39	1	B320-825	25	1	B320-992	37	1
B320-556	29	1	B320-826	23	1	B320-993	37	1
B320-557	31	2	B320-828	39	1	B320-995	31	1
B320-558	31	2	B320-868	30	2	B320-996	31	1
B320-559	31	2	B320-870	35	1	B320-997	37	1
B320-560	27	1	B320-871	35	1	C320-C15	23	1
B320-561	29	2	B320-872	35	1	C320-C16	23	1
B320-569	29	1	B320-874	35	1	C320-C18	23	1
B320-572	27	1	B320-875	35	2	C320-C20	23	1
B320-586	23	2	B320-894	35	1	C320-C27	23	1
B320-587	25	1	B320-896	33	1	C320-K4	29	1
B320-588	29	2	B320-897	33	1	C320-K56	31	1
B320-593	25	5	B320-898	33	1	C320-K64	31	1
B320-6	25	1	B320-902	35, 37	3	C320-K65	33	1
B320-604	23	2	B320-904	30	1	C320-K74	35	1
B320-605	25	1	B320-908	35	1	C320-K75	36	1
B320-621	39	1	B320-909	33	1	C320-K84	36	1
B320-626	39	1	B320-910	35	1	C320-K87	36	1
B320-629	39	1	B320-911	33	1	C320-K93	36	1
B329-634	30	1	B320-912	35	1	C320-K97	36	1
B320-637	30	2	B320-913	33	2	C320-Q1	39	1
B320-638	30	1	B320-914	33	2	C320-Q2	39	1
B320-639	30	2	B320-929	39	1	C320-102	27	1
B320-64	27	2	B320-930	39	1	C320-1024	39	1
B320-69	29	1	B320-931	39	1	C320-1031	35	1
B320-70	29	1	B320-932	39	1	C320-111	29	1
B320-703	30	1	B320-933	39	2	C320-345	27	1
B320-704	30	1	B320-934	39	1	C320-470	23	1
B320-705	30	1	B320-935	39	1	C320-472	27	1
B320-706	30	1	B320-936	39	1	C320-516	27	1
B320-707	30	1	B320-938	39	1	C320-644	30	1
B320-708	29	1	B320-940	31	2	C320-721	29	1
B320-71	29	1	B320-945	36	2	C320-885	31	1
B320-710	30	1	B320-946	36	1	C320-899	31	1
B320-715	39	1	B320-947	36	1	C320-900	31	1
B320-716	39	1	B320-948	36	1	C320-901	35	1
B320-717	39	1	B320-949	35	1	D320-C21	23	1
B320-718	29	1	B320-950	35	4	D320-C35	29	1
B320-719	29	1	B320-953	36	1	D320-K5	30	1
B320-720	29	1	B320-954	36	1	D320-K72	35	1
B320-722	29	1	B320-955	36	1	D320-K77	30	1
B320-726	30	2	B320-956	36	1	D320-451	25	1
B320-73	29	1	B320-961	36	1	D320-459	23	1
B320-738	39	3	B320-962	37	2	D320-471	23	1
B320-739	39	30	B320-963	37	1	D320-645	30	1
B320-74	29	1	B320-964	37	3	D320-979	36	1
B320-75	29	2	B320-965	37	1	E320-K1	23	1
B320-76	29	2	B320-967	37	1	E320-454	23	1
B320-79	29	1	B320-968	37	1	F320-P1	39	1
B320-80	29	2	B320-970	37	1	42A6954-1	39	1

RESTRICTED
AN 05-35-33
SECTION XI—STANDARD PARTS LIST

PART NUMBER	NOMENCLATURE	TOTAL QUANTITY	ATTACHING QUANTITY	PART NUMBER	NOMENCLATURE	TOTAL QUANTITY	ATTACHING QUANTITY
F10-2BN	Nut	2		F88-20ET	Sleeving	2	
F13-2-4RX	Screw	2		F88-8AT	Sleeving	1	
F13-2-5RC	Screw	2		F9-42RC	Screw	2	
F13-2-8BN	Screw	2		F95A-2	Spacer - Insul	2	
F13-22RC	Screw	6		F95A-8	Spacer - Insul	1	
F13-43RC	Screw	7		F95B-2	Spacer - Re-tain	1	
F13-44RC	Screw	3					
F13-68RC	Screw	1		AN3136-323	Lamp	4	
F22-C43P	Screw	1		AN505-2-3	Screw	3	
F22-F62	Screw	3		AN505-3-5	Screw	3	
F39-33	Switch - Toggle	1		AN505-4-6	Screw	1	
F49-18	Solenoid	1		AN505-6-8	Screw	1	
F53-21-3x6-10	Resistor	1		AN515-23	Screw	2	
F6-32RC	Screw	2		AN515-4-4	Screw	1	
F68-K22	Rivet	1		AN535-0-2	Screw - Drive	4	
F68-K22-1/2	Rivet	1		AN935-2	Washer - Lock	2	
F68-33N	Rivet	1		AN935-2L	Washer - Lock	2	
F7-23RC	Screw	2		AN935-4	Washer - Lock	1	
F73-10A	Sleeving	1		AN935-4L	Washer - Lock	5	
F73-11A	Sleeving	2		AN935-416L	Washer - Lock	1	
F73-4A	Sleeving	3		AN935-6L	Washer - Lock	1	
F76-60-5	Pin - Taper	3		AN935-8L	Washer - Lock	2	
F76-60-7	Pin - Taper	1		AN960-A3L	Washer	2	
F79-2-5	Pin - Dowel	1					
F79-3-10	Pin - Dowel	2		500-2-8	Screw	4	
F79-3-6	Pin - Dowel	2		500-3-4	Screw	2	
F79-3-8	Pin - Dowel	7		500-4-3	Screw	2	
F85-28F	Wire	1		500-4-4	Screw	7	
F85-34F	Wire	1		500-4-6	Screw	2	
F86-4RW	Contact	4		500-5-4	Screw	2	
F88-20AT	Sleeving	2					