

141

T.O. 5N10-4-2-4

★  
TECHNICAL MANUAL  
ILLUSTRATED PARTS BREAKDOWN

**HANDHELD AIRCRAFT SEXTANT  
(PENDULOUS MIRROR)**

KOLLSMAN TYPE NO.	AF TYPE	AF STOCK NO.
1972-02	MA-1	6225-1972-02
1972B-02	MA-1	6225-1972B-02

(KOLLSMAN)

**CHANGE**  
NOTICE

LATEST CHANGED PAGES SUPERSEDE  
THE SAME PAGES OF PREVIOUS DATE

Insert changed pages into basic  
publication. Destroy superseded pages.

PUBLISHED UNDER AUTHORITY OF THE SECRETARY OF THE AIR FORCE

★  
15 FEBRUARY 1956

CHANGED 15 APRIL 1959

Reproduction for non-military use of the information or illustrations contained in this publication is not permitted without specific approval of the issuing service (BuAer or USAF). The policy for use of Classified Publications is established for the Air Force in AFR 205-1 and for the Navy in Navy Regulations, Article 1509.

**LIST OF EFFECTIVE PAGES**

INSERT LATEST CHANGED PAGES. DESTROY SUPERSEDED PAGES.

NOTE: The portion of the text affected by the changes is indicated by a vertical line in the outer margins of the page.

TOTAL NUMBER OF PAGES IN THIS PUBLICATION IS 30 CONSISTING OF THE FOLLOWING:

<i>Page No.</i>	<i>Issue</i>
*Title .....	15 Apr 59
*A .....	15 Apr 59
i thru ii .....	Original
*1 .....	15 Apr 59
2 .....	Original
*3 .....	15 Apr 59
4 thru 10 .....	Original
*11 thru 13 .....	15 Apr 59
14 thru 17 .....	Original
*18 thru 26 .....	15 Apr 59

\* The asterisk indicates pages changed, added or deleted by the current change.

ADDITIONAL COPIES OF THIS PUBLICATION MAY BE OBTAINED AS FOLLOWS:

**USAF**

USAF ACTIVITIES.—In accordance with T.O. 00-5-2.  
 NAVY ACTIVITIES.—Submit request to nearest supply point listed below, using form NavAer 140; NASD, Philadelphia, Pa.; NAS, Alameda, Calif.; NAS, Jacksonville, Fla.; NAS, Norfolk, Va.; NAS, San Diego, Calif.; Aviation Supply Annex, NSD, Guam.  
 For listing of available material and details of distribution see Naval Aeronautics Publications Index NavAer 00-500.

## TABLE OF CONTENTS

Section	Page
I INTRODUCTION .....	1
II GROUP ASSEMBLY PARTS LIST .....	3
Figure 2. Handheld Aircraft Sextant .....	3
Figure 3. Averager Assembly .....	5
Figure 4. Averager Yoke and Index Assembly, and Mounting Plate Assembly .....	7
Figure 5. Clock Mechanism, Control Unit, Plate, Shaft and Clutch, Dial Plate and Gear Assemblies .....	9
Figure 6. Averager Cover Assembly .....	10
Figure 7. Counter and Coupling Assembly .....	11
Figure 8. Hand Held Sextant (Less Averager) .....	13
Figure 9. Body Assembly .....	15
Figure 10. Condenser Lens Assembly, 1st and 2nd Objective Lens Assembly, Index Housing Assembly, and Index Prism Mount Assembly .....	17
Figure 11. Left Cover, Eyepiece, Desiccator, and Field Lens Assemblies .....	19
Figure 12. Mirror Unit, Prism and Lens Mount Assembly, Lamp and Housing Assembly, and Main Shaft Assembly .....	21
Figure 13. Right Cover Assembly, and Axle Assembly .....	22
III NUMERICAL INDEX .....	23

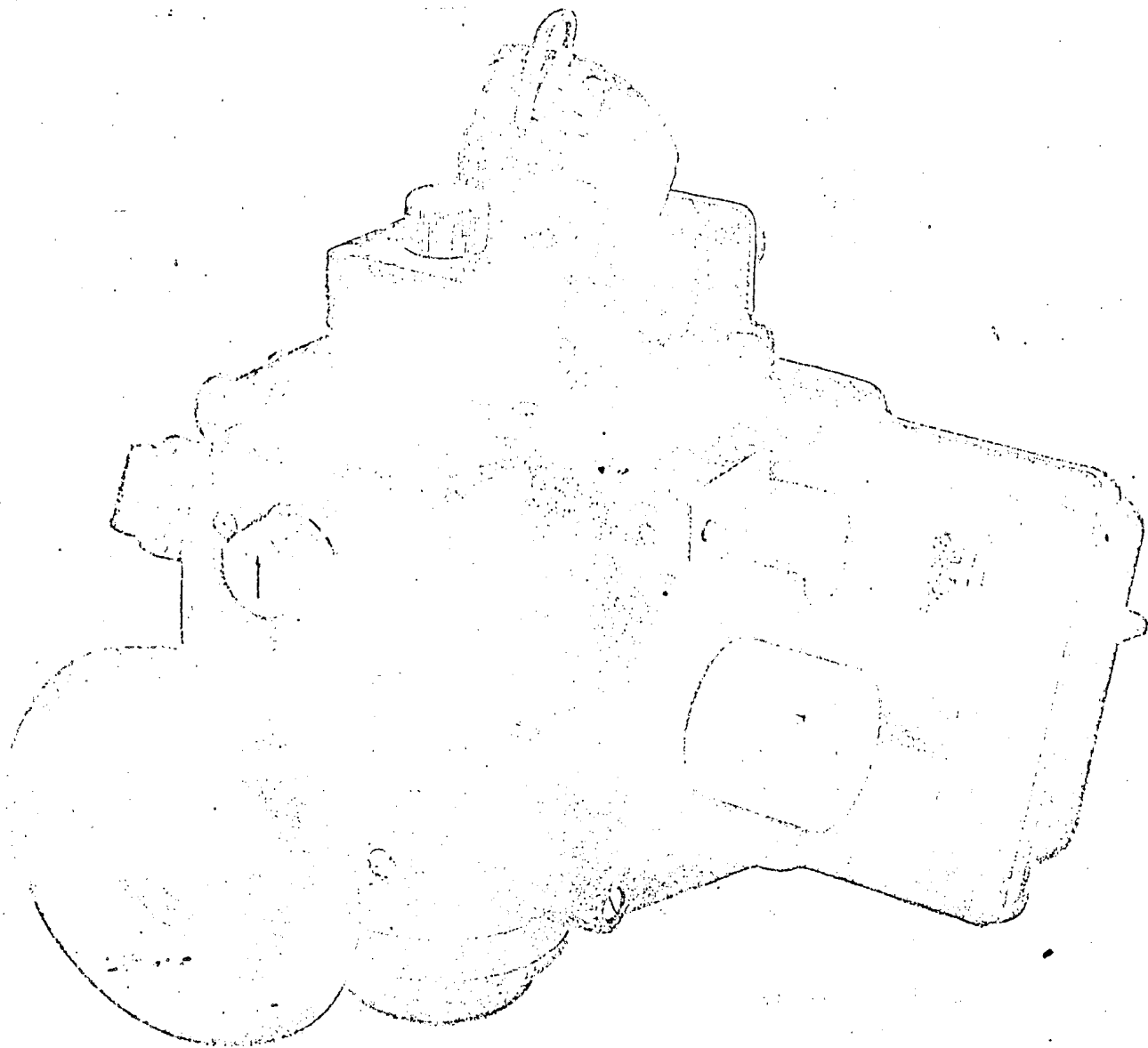


Figure 1. Handheld Aircraft Sextant, Kollsman Type 1972-02, Air Force Type MA-1

## SECTION I INTRODUCTION

### 1-1. INTRODUCTION.

1-2. This publication contains the group assembly parts list for type 1972-02 and 1972B-02 Handheld Aircraft Sextants, AF Type MA-1, manufactured by Kollsman Instrument Corporation, Elmhurst, N. Y. (See figure 1.)

1-3. The complete identification of an instrument is made up of two numbers: the type number which is the basic number designating an instrument of particular type and construction, and the final dash number which identifies the physical characteristics.

### 1-4. GROUP ASSEMBLY PARTS LIST.

1-5. The Group Assembly Parts List, with its accompanying illustrations, lists and illustrates all parts contained in the instrument. Wherever possible, without unnecessarily disturbing listing, assemblies and components are listed in order of disassembly, except for attaching parts. Attaching parts follow immediately after item to be attached, and precede any components of said item. The parts are captioned "Attaching Parts" and a symbol (—\*—) separates them from subsequent parts or assemblies.

1-6. PART NUMBERS. Part numbers listed are those of Kollsman unless otherwise identified as government standard (AN) or by manufacturers' identification given parenthetically in Description column. These numbers are current at time of publication. Similar numbers differing only in a change letter following dash are interchangeable. Where part is not interchangeable it will be so specified. "No Number" indicates part or assembly used for illustration purposes only and cannot be procured.

1-7. FIGURE NUMBER. The figure number identifies illustration on which listed part is contained.

1-8. INDEX NUMBER. The index number references part on illustration.

1-9. DESCRIPTION. The nomenclature used is assigned by manufacturer and is a description of part. A system of indention is employed to indicate component parts of the instrument. Thus, name of complete assembly is arranged in first column; name of sub-assemblies and parts, which compose the complete assembly begin in second column; and name of the sub-sub-assembly, assemblies and parts, which go to make up sub-assemblies, begin in the third, fourth, fifth or sixth columns, as applicable.

1-10. UNITS PER ASSEMBLY. This column contains the quantity of units per assembly, per sub-assembly or per sub-sub-assembly. The letters "NP" mean not procurable. The letters "Ref" signify second listing of the part.

1-11. USABLE ON CODE. This column is used when more than one instrument is being described. Instruments basic in design and construction, but varying slightly in detail, have been combined in a common listing. The code employs identifying letters with reference to particular instrument type, as listed below in Master Usable on Coding List. No letter is used when part is applicable to all instruments.

### 1-12. MASTER USABLE ON CODING LIST.

Usable on Code	Sextant Type Number
A	1972-02
B	1972B-02

### 1-13. VENDORS' CODE.

Vendors' Code	Vendors' Name and Address
BWC	Boston Insulated Wire & Cable Co. Boston, Mass.
DCR	Dow Corning Corp. Midland, Mich.
DXN	William Dixon, Inc. Newark, N. J.
FAF	Fafnir Bearing Co., The New Britain, Conn.
GLQ	L. F. Grammes and Sons, Inc. Allentown, Pa.
GOS	Goshen Rubber Co., Inc. Goshen, Ind.
LIR	Linear, Inc. Philadelphia, Pa.
ND	New Departure Div. General Motors Corp. Bristol, Conn.
WKI	Waldes Kohinoor, Inc. Long Island City, N. Y.

### 1-14. NUMERICAL INDEX.

1-15. The Numerical Index columns enumerate part numbers of each instrument in sequence, first alphabetical and then numerical. Parts designated "No Number" are listed in alphabetical order, by title, in Parts Number's column and precede alphabetical sequence of part numbers. The Figure and Index Number column contains all figure and index numbers of all parts listed in Group Assembly Parts List. If an Air Force Stock Number for an item does not appear in designated column, reference should be made to S-00-1 Master Numerical Index.

**Section I**  
**Introduction**

T.O. 5N10-4-2-4

**1-16. HOW TO USE ILLUSTRATED PARTS BREAK-DOWN.**

**1-17. PART NUMBER KNOWN.** If a part number is known and it is desired to find where part is illustrated, locate part number in Numerical Index. Note figure and index number corresponding to part number. Locate index number on exploded view.

**1-18. PART NUMBER NOT KNOWN.** If a part number is not known and it is desired to find part number, locate part on exploded view. Note index number and locate part number on applicable parts list.

**1-19. SOURCE CODE DEFINITIONS.**

**1-20. CODE "P" — PARTS UNDER INVENTORY STOCK CONTROL.**

Code "P" is applied to parts which are procured in view of relatively high usage. Code "P" parts may be requisitioned and installed by any maintenance level, unless followed by the letter "O" which restricts requisition and replacement to Overhaul and Repair (Depot) level only.

Code "P1" is applied to parts which are very difficult or uneconomical to manufacture. Service manufacture is considered impracticable. Code "P1" parts may be requisitioned and installed by any maintenance level, unless followed by the letter "O" which restricts requisition and replacement to Overhaul and Repair (Depot) level only.

**1-23. CODE "M" — PARTS NOT PROCURED.**

Code "M" is applied to parts which are within the facilities of any activity to manufacture. Procurement and stocking are not justified in view of the relatively low usage, or storage and installation factors of these parts. Needs are to be met by local manufacture as required.

Code "M1" is applied to parts which can be manufactured only by utilizing the facilities of the Overhaul and Repair (Depot) activity. Procurement and stocking of these parts are not justified in view of their relatively

low usage and installation factors. The needs of all activities are to be met through salvage or by Overhaul and Repair (Depot) level manufacture.

**1-26. CODE "A" — ASSEMBLY NOT PROCURED.**

Code "A" is applied to assemblies made up of two or more units each of which carries an individual part number and description and which may be assembled by any Maintenance level.

Code "A1" is applied to assemblies made up of two or more parts each of which carries an individual part number and description, and which may be assembled only by activities having Overhaul and Repair (Depot) facilities.

**1-29. CODE "X" — PARTS CONSIDERED IMPRACTICABLE FOR MANUFACTURE OR PROCUREMENT.**

Code "X" is applied to main structural members or similar parts which, if required, would suggest extensive instrument reconditioning. The need of a part, or parts, coded "X" should normally result in a recommendation to retire the instrument from service.

Code "X1" is applied to parts for which procurement of the next larger assembly is justified; e.g., an integral part, such as welded segments inseparable from its assembly, a part machined in a matched set, or a part of an assembly, which, if required, would suggest extensive reconditioning of each assembly.

Code "X2" is applied to parts which are neither procured nor stocked. Activities requiring such parts shall attempt to obtain from salvage; if not obtainable from salvage, such parts shall be requisitioned through normal supply channels with supporting justification.

**1-33. CODE (\*) — PARTS NOT PROCURED, MANUFACTURED OR STOCKED.**

Code (\*) is applied to installation drawings, diagrams, instructions or field service drawings, basic drawing numbers which cannot be procured or manufactured, and obsolete parts.

**SECTION II  
GROUP ASSEMBLY PARTS LIST**

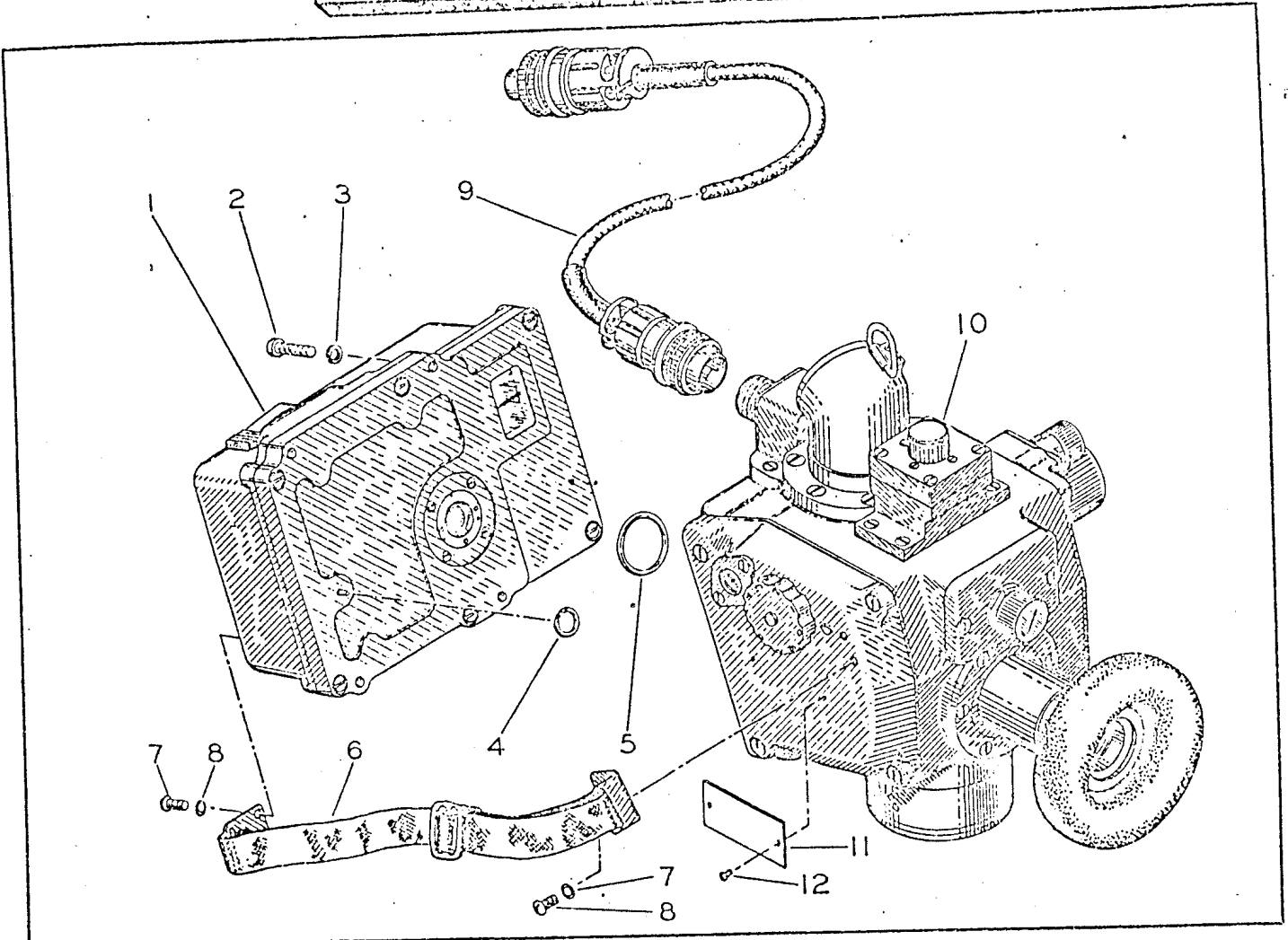


Figure 2. Handheld Aircraft Sextant

FIGURE & INDEX NO.	PART NUMBER	1	2	3	4	5	6	7	DESCRIPTION	UNITS PER ASSY.	USABLE ON CODE
<b>HANDHELD AIRCRAFT SEXTANT</b>											
2-	1972-02								SEXTANT, Handheld Aircraft .....	1	A
	1972B-02								SEXTANT, Handheld Aircraft .....	1	B
-1	87 19720 0020								AVERAGER ASSEMBLY (See figure 3) .....	1	
ATTACHING PARTS											
-2	61 40105 0644								SCREW, Flat fillister head, stainless steel, 6-40 x 11/16 inch long .....	4	
-3	61 72402 0006								LOCKWASHER, Light, stainless steel, blackened, for size 6 screw .....	4	
RING, Sealing											
-4	AN6227B6								.....	1	
-5	X1730								.....	1	
-6	85 19720 0160								STRAP ASSEMBLY, Hand .....	1	
ATTACHING PARTS											
-7	61 40305 0616								SCREW, Round head, stainless steel, 6-40 x 1/4 inch long .....	4	
-8	61 72402 0006								LOCKWASHER, Light, stainless steel, blackened, for size 6 screw .....	4	
PLUG AND CABLE ASSEMBLY											
-9	85 19720 0171								.....	1	
-10	No Number								SEXTANT, Handheld (less averager) (See figure 8) .....	1	
-11	S.O. 52184-2								NAMEPLATE (Contract NO as 57-907) .....	1	B
ATTACHING PARTS											
-12	X30								SCREW .....	2	B
2-	59 19729 0010								CASE, Carrying (not illustrated) .....	1	A
2-	50 19721 0030								CASE, Carrying (not illustrated) .....	1	B

\* Non Procurable

Changed 15 April 1959

Section II  
Group Assembly Parts List

T.O. 5N10-4-2-4

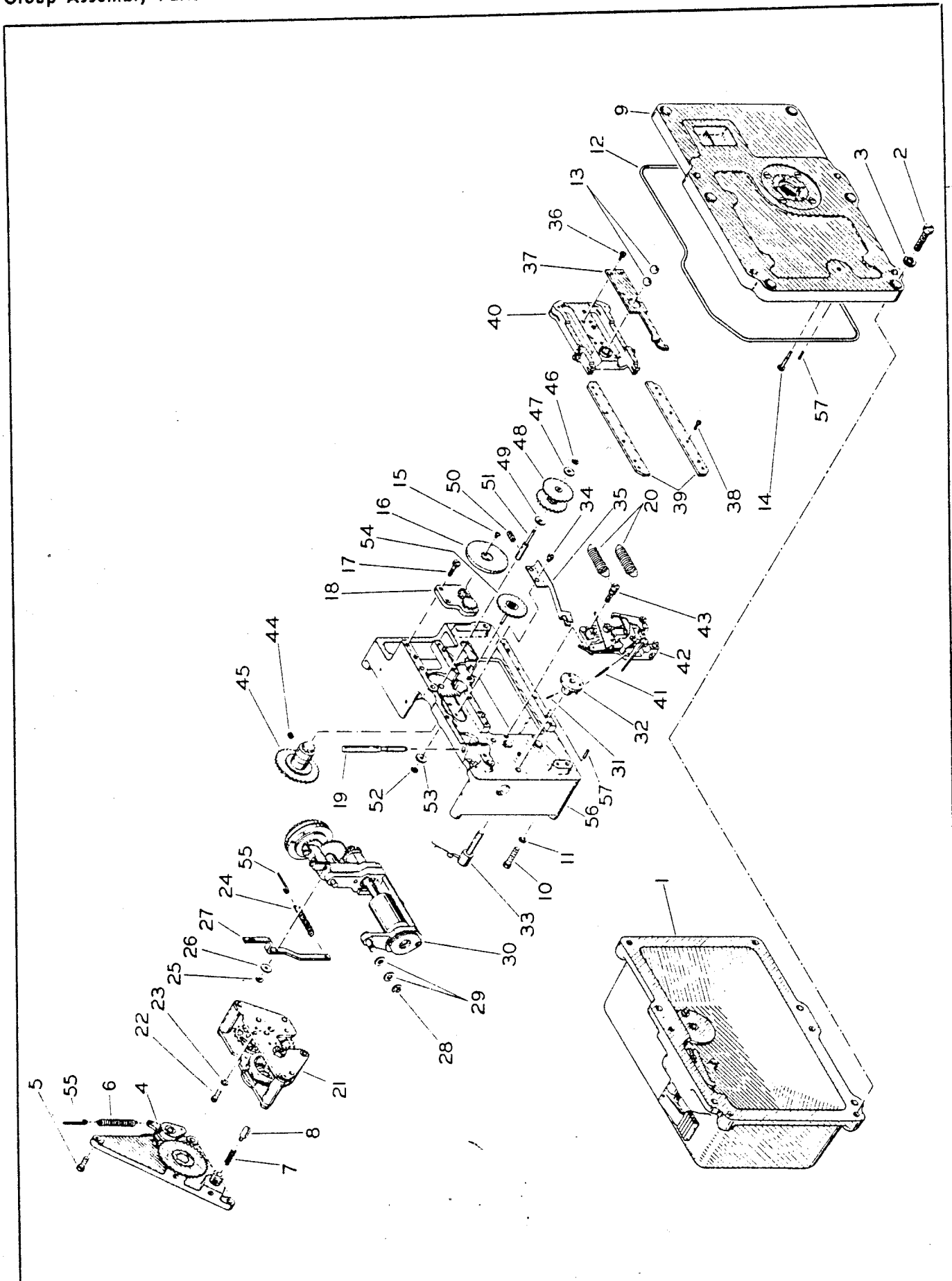


Figure 3. Averager Assembly



FIG. & INDEX NO.	PART NUMBER	DESCRIPTION							UNITS PER ASSY.	USABLE ON CODE
		1	2	3	4	5	6	7		
<b>AVERAGER ASSEMBLY</b>										
3-	87 19720 0020	AVERAGER ASSEMBLY (See figure 2-1).....							Ref	1
-1	85 19720 0020	COVER ASSEMBLY, Averager (See figure 6).....							1	
ATTACHING PARTS										
-2	FFIL614SS8PX	SCREW, Flat fillister head, stainless steel, blackened, 6-40 x 7/16 in. long.....							4	
-3	KL6SS4PX (AN)	LOCKWASHER, Stainless steel, blackened, for size 6 screw.....							4	
ATTACHING PARTS										
-4	1471C989B	PLATE ASSEMBLY (See figure 5-38).....							1	
ATTACHING PART										
-5	FFIL309Cd	SCREW, Flat fillister head, brass, cadmium plated, 3-56 x 9/32 in. long.....							8	
ATTACHING PARTS										
-6	1045-371B	SPRING, Music wire (0.016 OD).....							1	
-7	1045-350C	SPRING, Compression.....							1	
-8	1045-351	CONTACT, Pressure.....							1	
-9	1471C986	PLATE ASSEMBLY, Mounting (See figure 4-41).....							1	
ATTACHING PARTS										
-10	FFIL314Cd	SCREW, Flat fillister head, brass, cadmium plated, 3-56 x 7/16 in. long.....							4	
-11	KL3B	LOCKWASHER, Light, black oxidized for size 3 screw.....							4	
ATTACHING PARTS										
-12	X1690	RING, Sealing.....							1	
-13	1045-247B	BALL, 0.1875 diameter stainless steel.....							2	
-14	1471C324	ROD, Push.....							1	
-15	398KN74	SCREW, Dial.....							2	
-16	1471B355	DIAL, Averager.....							1	
-17	1045-354C	SCREW, Shoulder.....							2	
-18	1471B997	PLATE AND GEAR ASSEMBLY, Dial (See figure 5-62).....							1	
-19	1426-321B	PLUNGER.....							1	
-20	1045-312C	SPRING, Power.....							2	
-21	1471B960	MECHANISM ASSEMBLY, Clock (See figure 5-1).....							1	
ATTACHING PARTS										
-22	FFIL207Cd	SCREW, Flat fillister head, brass, cadmium plated, 2-64 x 7/32 in. long.....							3	
-23	KL2BZ (AN)	LOCKWASHER, Light, phosphor bronze, for size 2 screw.....							3	
ATTACHING PARTS										
-24	1045-372C	SPRING, Music wire (0.012 OD).....							1	
-25	5133-6	RING, Retaining (WKI).....							1	
-26	1045-104	WASHER, Thrust.....							1	
-27	1045-307C	LEVER, Index release.....							1	
-28	5133-12	RING, Retaining (WKI).....							1	
-29	1045-361B	SPACER.....							2	
-30	1471C969	YOKE AND INDEX ASSEMBLY (See figure 4-1).....							1	
-31	20632	PIN, Taper (DXN).....							1	
-32	1426-994B	FORK ASSEMBLY, Sweep.....							1	
-33	1045-985B	SPRING ASSEMBLY.....							1	
-34	FFIL103Cd	SCREW, Flat fillister head, brass, cadmium plated, 1-72 x 3/32 in. long.....							2	
-35	1426-323B	SPRING, Plunger.....							1	
-36	FFIL104Cd	SCREW, Flat fillister head, brass, cadmium plated, 1-72 x 1/8 in. long.....							8	
-37	85 19720 0010	PLATE ASSEMBLY, Ball carriage stop.....							1	
-38	FFIL005Cd	SCREW, Flat fillister head, brass, cadmium plated, 0-80 x 5/32 in. long.....							8	
-39	1045-317E	GUIDE, Ball carriage.....							2	
-40	1471B981B	CARRIAGE ASSEMBLY, Ball.....							1	
-41	1426-332C	SPRING, Stainless steel, 0.008 dia.....							1	
-42	1471B988C	CONTROL UNIT (See figure 5-21).....							1	
ATTACHING PART										
-43	1045-310	SCREW Spring anchor.....							2	
ATTACHING PARTS										
-44	X5100-54-1	SCREW, Set, 4-48 x 1/8 in. long.....							1	
-45	1045-1925	SHAFT AND CLUTCH ASSEMBLY, Pinion (See figure 5-51).....							1	
-46	5133-6	RING, Retaining (WKI).....							1	
-47	1045-104	WASHER, Thrust.....							1	
-48	1045-988B	GEAR ASSEMBLY.....							1	
-49	1471B104-3	WASHER.....							1	
-50	X5100-126-1	SCREW, Set, 4-48 x 1/4 in. long.....							1	
-51	1471B291B	SHAFT, Reduction gear.....							1	
-52	5133-6	RING, Retaining (WKI).....							1	
-53	1045-104	WASHER, Thrust.....							1	
-54	1471B979	GEAR AND SHAFT ASSEMBLY, Idler.....							1	
-55	1045-308	HOOK, Spring.....							2	
-56	1471C984B	FRAME ASSEMBLY, Mechanism.....							1	
-57	1045-364B	PIN, Locating.....							4	

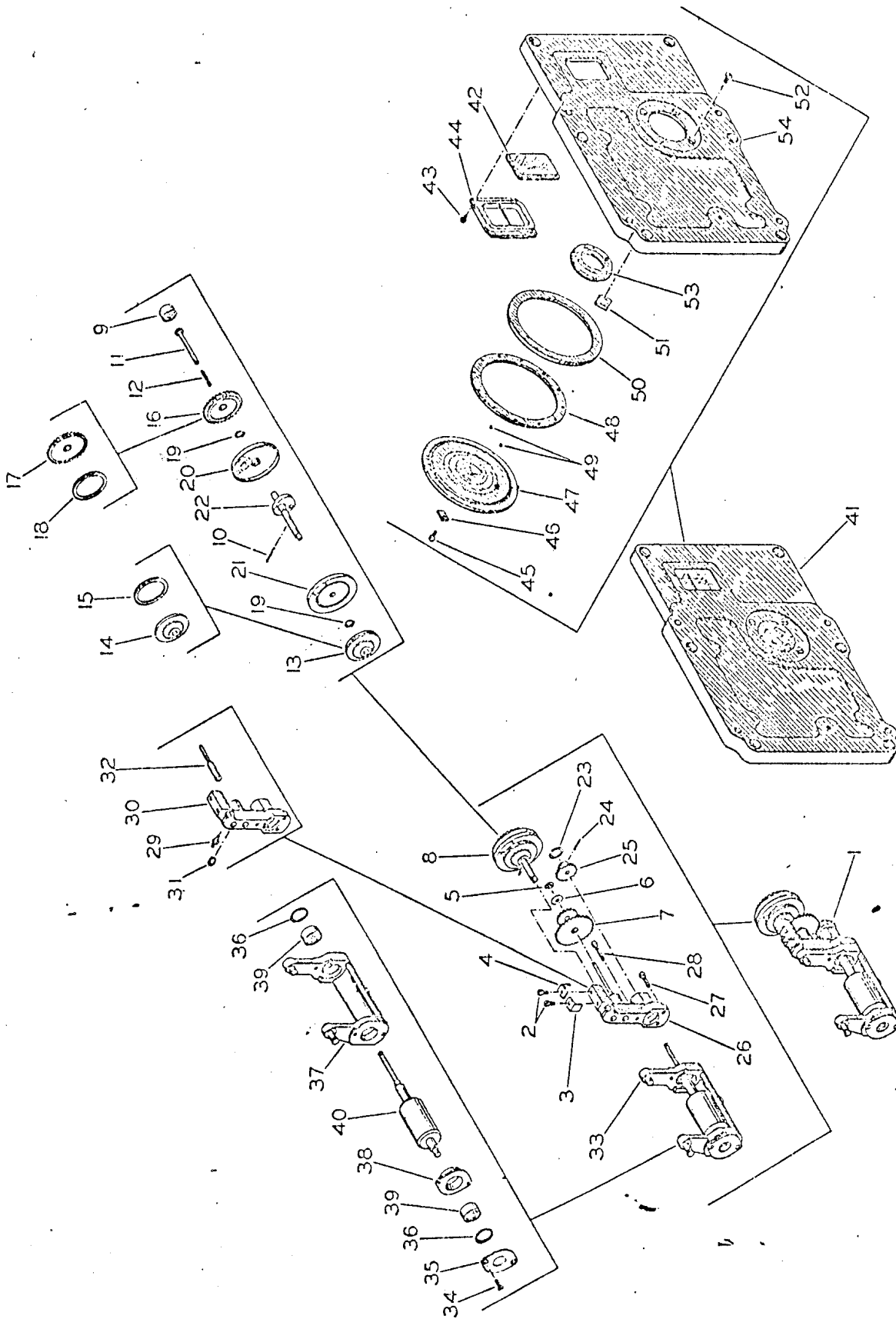


Figure 4. Averager Yoke and Index Assembly and Mounting Plate Assembly

FIG. & INDEX NO.	PART NUMBER	DESCRIPTION	UNITS PER ASSY.	USABLE ON CODE
<b>AVERAGER YOKE AND INDEX ASSEMBLY AND MOUNTING PLATE ASSEMBLY</b>				
4-	No Number	AVERAGER YOKE AND INDEX ASSEMBLY AND MOUNTING PLATE ASSEMBLY	NP	
-1	1471C969	YOKE AND INDEX ASSEMBLY (See figure 3-30)	Ref	
-2	FFIL204	SCREW, Flat fillister head, brass, 2-64 x 1/8 in. long	2	
-3	1045-295B	CLIP, Shaft retainer	1	
-4	1045-296C	CLIP, Gear retainer	1	
-5	5133-6	RING, Retaining (WKI)	1	
-6	1045-104	WASHER, Thrust	1	
-7	1045-971	GEAR ASSEMBLY, Reduction	1	
-8	1471C963	INDEX ASSEMBLY	1	
-9	1045-280	RETAINER, Friction gear box	1	
-10	1045-279	PIN, Yoke, stainless steel, 0.0475 OD x 0.312 in. long	1	
-11	1045-278B	SHAFT, Cam	1	
-12	1045-281B	SPRING, Slide hub	1	
-13	1045-970C	DISK ASSEMBLY, Friction	1	
-14	No Number	GEAR AND DISK ASSEMBLY	NP	
-15	1045-262B	DISK, Friction, cork, 0.594 ID x 0.687 OD x 0.035 in. thick	1	
-16	1045-972B	GEAR ASSEMBLY, Friction	1	
-17	No Number	HUB AND GEAR ASSEMBLY	NP	
-18	1045-262B	DISK, Friction, cork, 0.594 ID x 0.687 OD x 0.035 in. thick	1	
4-	1471C962	SHAFT AND DIAL ASSEMBLY, Index	1	
-19	X4406-1-1	RING, External retaining	2	
-20	1471C960	INDEX ASSEMBLY, Directional	1	
-21	1471C961	FOLLOWER ASSEMBLY, Index	1	
-22	1045-978C	CAM AND SHAFT ASSEMBLY	1	
-23	871-11	RING, Snap	1	
-24	1045-294	PIN	1	
-25	1045-290B	GEAR, Drum	1	
-26	1471B982B	BRACKET ASSEMBLY, Index	1	
<b>ATTACHING PARTS</b>				
-27	FFIL209	SCREW, Flat fillister head, brass, 2-64 x 9/32 in. long	2	
-28	FFIL212	SCREW, Flat fillister head, brass, 2-64 x 3/8 in. long	1	
-29	1471B306	SHAFT	1	
-30	1045-283D	BRACKET, Index	1	
-31	X5100-54-1	SCREW, Set, 4-48 x 1/8 in. long	1	
-32	1471B291B	SHAFT, Reduction gear	1	
-33	No Number	YOKE AND DRUM ASSEMBLY	NP	
-34	FH006	SCREW, Flat head, brass, 0-80 x 3/16 in. long	2	
-35	1045-286	RETAINER, Bearing	1	
-36	402-30	SHIM	AR	
-37	1471B970	YOKE AND PIN ASSEMBLY, Drum	1	
-38	1045-285	ADAPTER, Drum bearing	1	
-39	R2S5358J-P17D	BEARING, Ball (ND)	2	
-40	1426-978D	DRUM AND SHAFT ASSEMBLY	1	
-41	1471C986	PLATE ASSEMBLY, Mounting (See figure 3-9)	Ref	
-42	1471C249	WINDOW	1	
<b>ATTACHING PARTS</b>				
-43	X30	SCREW, Black oxidized, 80 threads per inch	4	
-44	1471C983	RETAINER ASSEMBLY, Window	1	
-45	FFIL205Cd	SCREW, Flat fillister head, brass, cadmium plated, 2-64 x 5/32 in. long	2	
-46	1471B254	RETAINER	2	
-47	1471-250C	PLATE, Bearing	1	
-48	1045-251D	RETAINER	1	
-49	1045-256B	BALL, Stainless steel, 0.0625 diameter	39	
-50	1045-252	RING, Bearing	1	
-51	1045-439B	CLAMP	4	
<b>ATTACHING PART</b>				
-52	FH205Cd	SCREW, Flat head, brass, cadmium plated, 2-64 x 5/32 in. long	4	
-53	1426-977B	PLATE ASSEMBLY, Eccentric mounting	1	
-54	1471C256D	PLATE, Mounting	1	

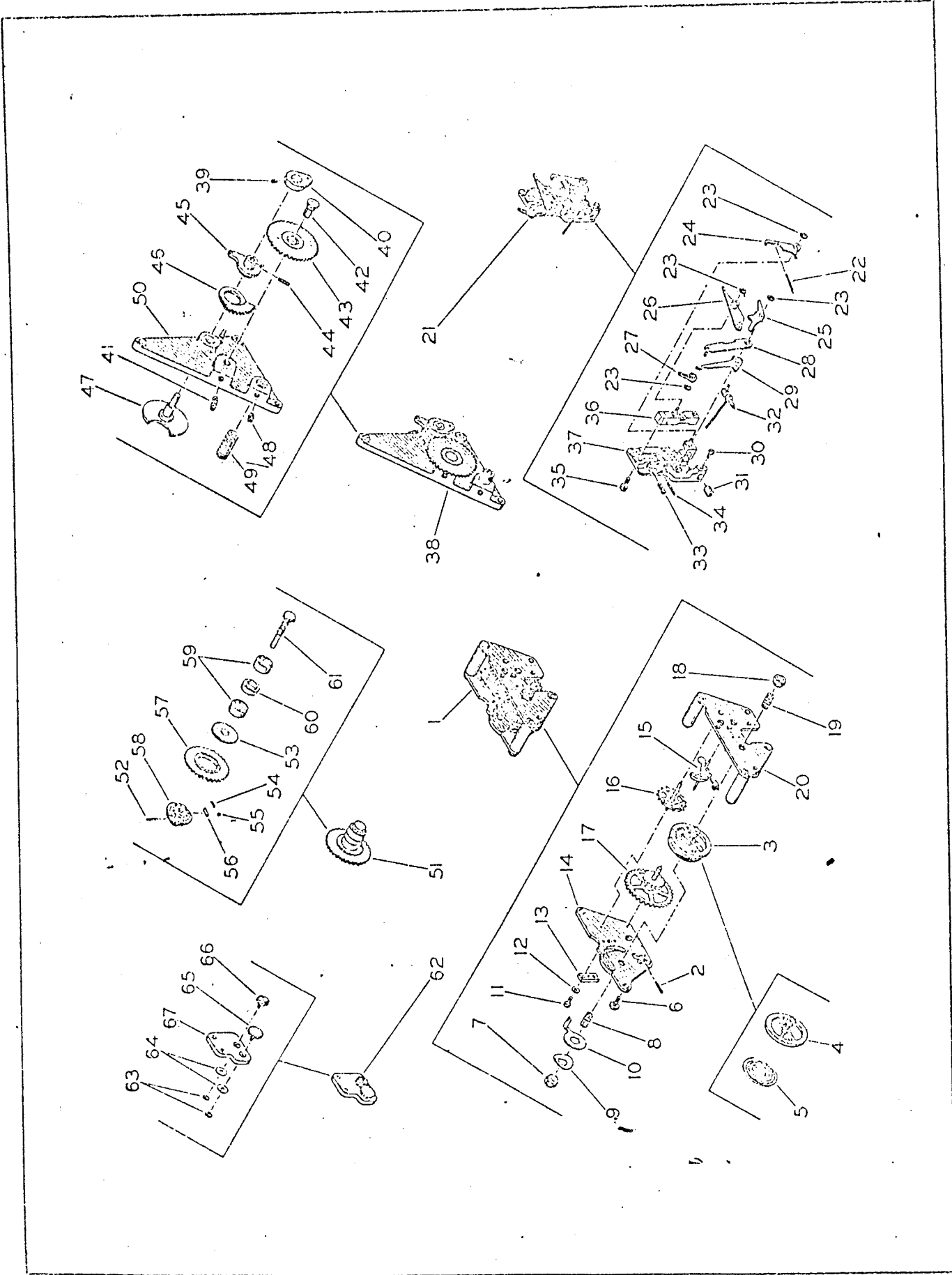


Figure 5. Clock Mechanism, Control Unit, Plate, Shaft and Clutch, Dial Plate and Gear Assemblies

FIG. & INDEX NO.	PART NUMBER	DESCRIPTION	UNITS PER ASSY.	USABLE ON CODE
<b>CLOCK MECHANISM, CONTROL UNIT, PLATE, SHAFT AND CLUTCH, DIAL PLATE AND GEAR ASSEMBLIES</b>				
5-	No Number	CLOCK MECHANISM, CONTROL UNIT, PLATE, SHAFT AND CLUTCH, DIAL PLATE AND GEAR ASSEMBLIES	NP	
-1	1471B960	MECHANISM ASSEMBLY, Clock (See figure 3-21)	Ref 1	
-2	20632	PIN, Taper (DXN)	1	
-3	1471B963	HAIRSPRING AND BALANCE ASSEMBLY	1	
-4	No Number	BALANCE ASSEMBLY	NP	
-5	1471B966	HAIRSPRING AND COLLET ASSEMBLY	1	
-6	1045-243	SCREW, Clock mechanism	8	
-7	1046-246	NUT, Lock, 7-64 threads per inch	1	
-8	1045-964B	JEWEL ASSEMBLY	1	
-9	1045-328	WASHER, Spring, 0.220 ID x 0.437 OD x 0.0159 thick	1	
-10	1045-244B	ADJUSTER, Hairspring	1	
-11	FF1L205	SCREW, Flat fillister head, brass, 2-64 x 5/32 in. long	1	
-12	865F18	WASHER, Brass, 0.089 ID x 0.170 OD x 0.0156 in. thick	1	
-13	1045-248C	PLATE, Adjustment	1	
-14	1471B962	PLATE ASSEMBLY, Top	1	
-15	1471B965B	VERGE AND FORK ASSEMBLY	1	
-16	1471B968B	PINION AND WHEEL ASSEMBLY, Escape	1	
-17	1471B966	GEAR AND SHAFT ASSEMBLY	1	
-18	1045-245	NUT, Lock, 7-64 threads per inch	1	
-19	1045-964B	JEWEL ASSEMBLY	1	
-20	1471B961	PLATE ASSEMBLY, Bottom	1	
-21	1471B988C	CONTROL UNIT, Averager (See figure 3-42)	Ref	
-22	1426-331B	SPRING, Shutter actuator, stainless steel (0.008 OD)	1	
-23	5133-6	RING, Retaining (WKI)	4	
-24	1426-980B	LEVER AND HUB ASSEMBLY, Shutter actuator	1	
-25	1426-979B	LATCH AND HUB ASSEMBLY, Shutter actuator	1	
-26	1426-982E	LATCH ASSEMBLY, Ball carriage stop	1	
-27	1426-308B	PAWL	1	
-28	1471B990B	LEVER ASSEMBLY, Pawl	1	
-29	1426-996	LEVER AND HUB ASSEMBLY, Pawl centering	1	
-30	FF1L204Cd	SCREW, Flat fillister head, brass, cadmium plated, 2-64 x 1/8 in. long	1	
-31	1471C736	BEARING	1	
-32	1426-989B	SHAFT ASSEMBLY, Rocker	1	
-33	FF1L006Cd	SCREW, Flat fillister head, brass, cadmium plated, 0-80 x 3/16 in. long	1	
-34	1471B15	SCREW	1	
-35	FF1L307Cd	SCREW, Flat fillister head, brass, cadmium plated, 3-56 x 7/32 in. long	2	
-36	1471B991B	MOUNT ASSEMBLY, Stop post	1	
-37	1471B998B	MOUNT ASSEMBLY, Control	1	
-38	1471C980B	PLATE ASSEMBLY (See figure 3-4)	Ref	
-39	X1282	SCREW, Set, 2-64 threads per inch, 1/8 in. long, cup point	2	
-40	1045-345D	COLLAR	1	
-41	X5100-126-1	SCREW, Set, 4-48 threads per inch	1	
-42	1045-346C	STUD, Mounting	1	
-43	1045-992	GEAR ASSEMBLY	1	
-44	1045-294	PIN, Drill rod, 0.043 OD x 0.245 in. long	1	
-45	1045-991B	MOUNTING PIECE ASSEMBLY, Spring	1	
-46	1045-342B	SECTOR	1	
-47	1471C992	SHAFT AND PLATE ASSEMBLY, Coupling	1	
-48	X5100-54-1	SCREW, Set, 4-48 threads per inch	1	
-49	1045-349B	SCREW, Pressure	1	
-50	1045-1940B	PLATE, Bearing and post assembly	1	
-51	1045-1925	SHAFT AND CLUTCH ASSEMBLY, Pinion (See figure 3-45)	Ref	
-52	20632	PIN, Taper (DXN)	1	
-53	1045-301B	PLATE, Clutch retainer	1	
-54	1045-351B	SPRING, Clutch, music wire (0.006 OD)	8	
-55	1045-256B	BALL, Clutch	8	
-56	1045-367	PLATE, Pressure	8	
-57	1045-980B	GEAR ASSEMBLY, Clutch	1	
-58	1045-983	CLUTCH ASSEMBLY	1	
-59	R2S5858J-P17D	BEARING, Ball (ND)	2	
-60	1045-300	SPACER, Bearing	1	
-61	1045-299B	SHAFT, Pinion clutch	1	
-62	1471B997	PLATE AND GEAR ASSEMBLY, Dial (See figure 3-18)	Ref	
-63	5133-6	RING, Retaining (WKI)	2	
-64	1471B104	WASHER, Thrust	AR	
-65	1471B360	GEAR, Intermediate	1	
-66	1471H356B	GEAR, Dial	1	
-67	No Number	PLATE AND BUSHING ASSEMBLY, Dial	NP	

Section II  
Group Assembly Parts List

T.O. 5N10-4-2-4

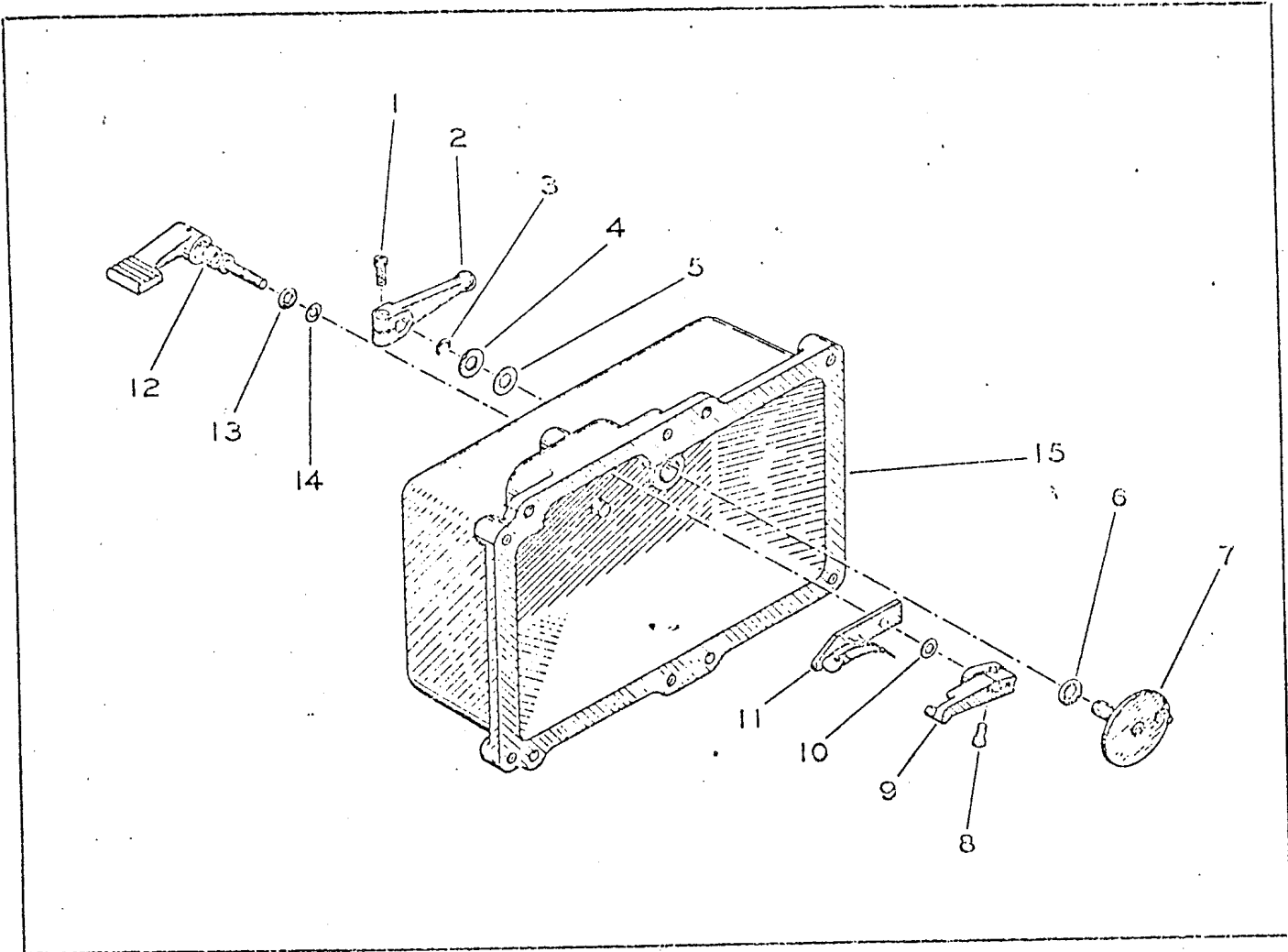


Figure 6. Averager Cover Assembly

FIG. & INDEX NO.	PART NUMBER	1	2	3	4	5	6	7	DESCRIPTION	UNITS PER ASSY.	USABLE ON CODE
<b>AVERAGER COVER ASSEMBLY</b>											
6-	85 19726 0020								COVER ASSEMBLY, Averager (See figure 3-1)	1	Ref
-1	FF11309SS8								SCREW, Flat fillister head, stainless steel, 3-56 x 9/32 in. long.	1	
-2	1043-352B								LEVER	1	
-3	5103-18W								RING, Retaining (WKI)	1	
-4	1471C11								SPACER, H.H. brass, 0.188 ID x 0.375 OD x 0.032 in. thick	1	
-5	1471C604								SPACER, Stainless steel, 0.188 ID x 0.375 OD x 0.010 in. thick	1	
-6	AN6227B3								RING, Sealing	1	
-7	1471C996B								SHAFT ASSEMBLY, Rewind	1	
-8	FF11306SS8								SCREW, Flat fillister head, stainless steel, 3-56 x 3/16 in. long.	1	
-9	1471C609								LEVER, Actuating	1	
-10	1015-18C2								SPACER, Phosphor bronze, 0.1285 ID x 0.250 OD x 0.0050 in. thick	1	
-11	1471C996B								SPRING AND MOUNT ASSEMBLY, Leaf	1	
-12	1471C995								LEVER ASSEMBLY, Operating	1	
-13	AN6227B1								RING, Sealing	1	
-14	1289C42-3								SPACER	1	
-15	No Number								COVER AND PIN ASSEMBLY	NP	

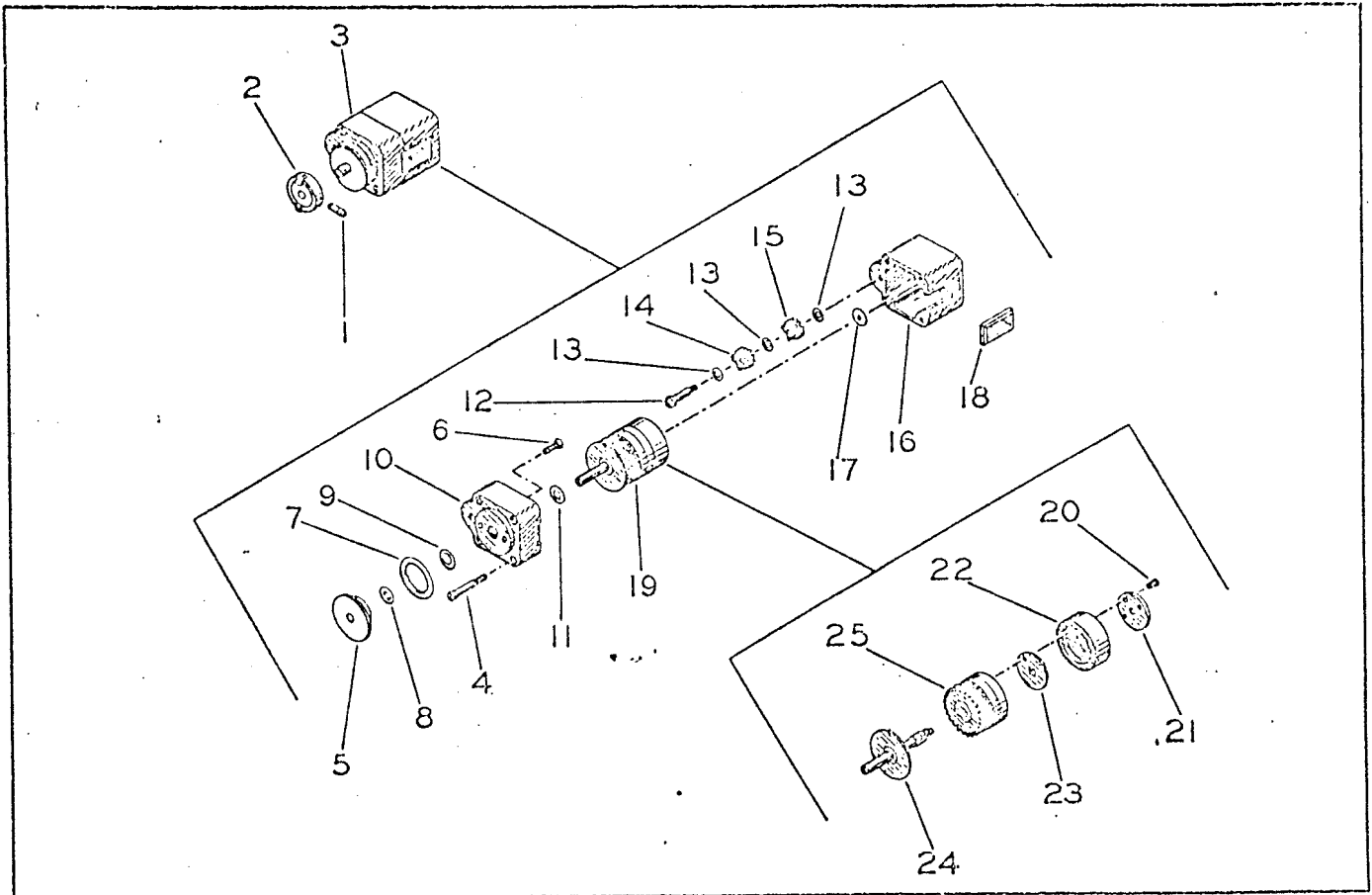


Figure 7. Counter and Coupling Assembly

FIGURE & INDEX NO.	PART NUMBER	1	2	3	4	5	6	7	DESCRIPTION	UNITS PER ASSY.	USABLE ON CODE
<b>COUNTER AND COUPLING ASSEMBLY</b>											
7-	85 19720 0310								COUNTER AND COUPLING ASSEMBLY (See figure 8-16)	Ref	
-1	X5100-98-1								SCREW, Set	2	
-2	1045-17C								COUPLING	1	
-3	88 19720 0010								COUNTER	1	
-4	45 14160 0010								SCREW	2	
7-	85 19720 0370								HOUSING ASSEMBLY, Rear	1	
-5	1471CG47B								RING, Retainer	1	
<b>ATTACHING PARTS</b>											
-6	61 40205 0012								SCREW, Flat head, stainless steel, 0-80 x 3/16 inch long	2	
-7	AN6227B9								RING, Sealing	1	
-8	AN6227B1								RING, Sealing	1	
-9	308KN95								WASHER	1	
-10	*No Number								HOUSING AND BEARING ASSEMBLY, Rear	1	
-11	1045-18C								WASHER	1	AR
-12	1416-19C								SHAFT, Pinion	1	
-13	1416-29B								WASHER	3	
-14	1416-10B								PINION	1	
-15	1416-11C								PINION	1	
-16	1416-002								HOUSING AND BEARING ASSEMBLY, Front	1	
-17	1416-27B								WASHER	1	AR
-18	27 19720 0020								WINDOW	1	
-19	1416J901								MECHANISM ASSEMBLY	1	
7-	1416D902								SHAFT AND DRUM ASSEMBLY	1	
-20	1416-30								SCREW	1	
-21	1416-18								NUT, Drum	1	
-22	1416D2								DRUM	1	
-23	1416-17								FLANGE, Drum	1	
-24	*No Number								GEAR AND BUSHING ASSEMBLY	1	
-25	1416D903								DRUM UNIT, Counter	1	

\* Non Procurable

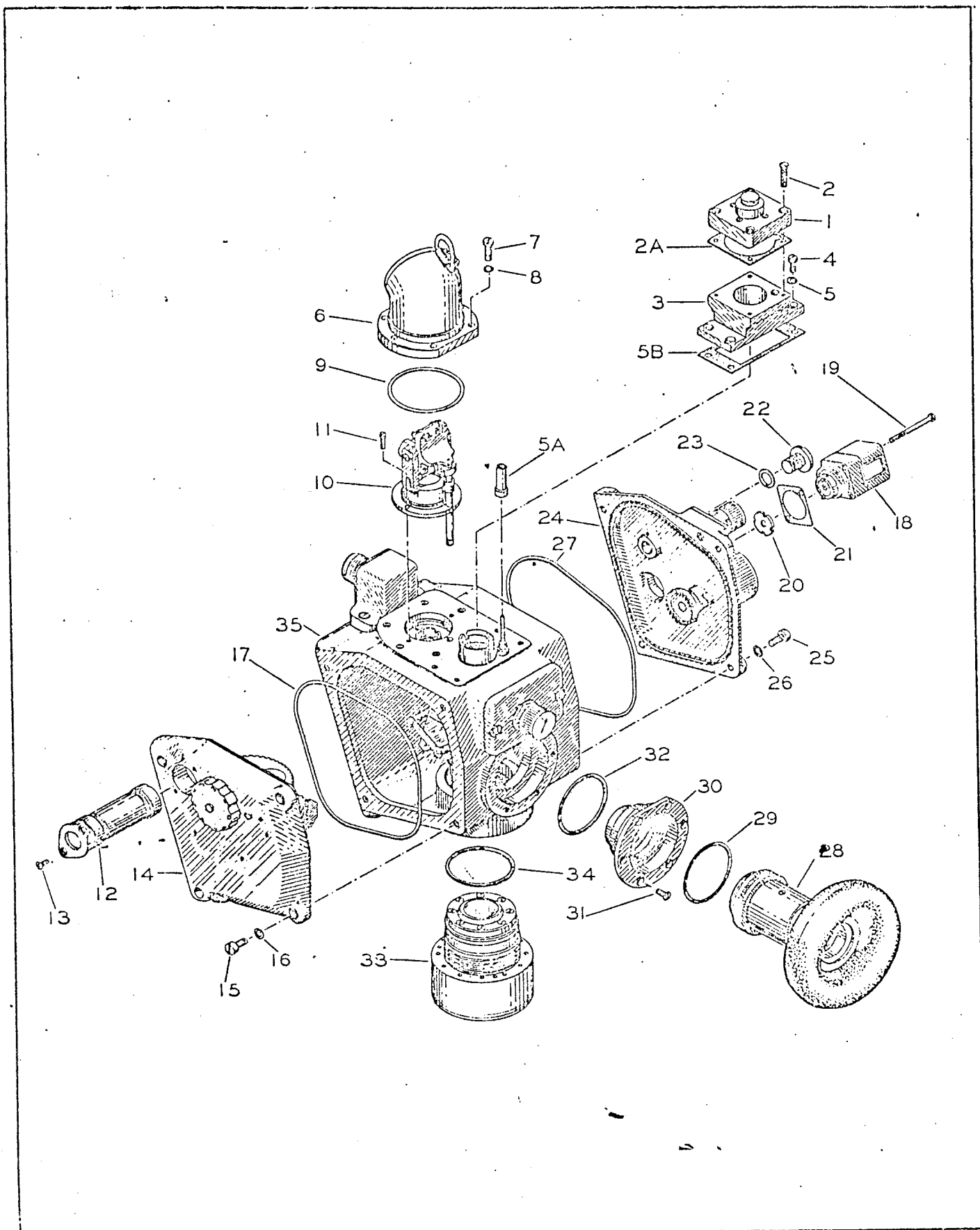


Figure C. Handheld Aircraft Sextant (Leis Averager)



FIGURE & INDEX NO.	PART NUMBER	1	2	3	4	5	6	7	DESCRIPTION	UNITS PER ASSY.	USABLE ON CODE	
<b>HANDHELD AIRCRAFT SEXTANT (LESS AVERAGER)</b>												
B-	*No Number	SEXTANT, Handheld (less averager) (See figure 2-10) .....							Ref			
-1	85 19720 0120	. LAMP AND HOUSING ASSEMBLY (See figure 12) .....							1			
		ATTACHING PART										
-2	61 40205 0332	. SCREW, Flat head, stainless steel, 3-56 x 1/2 inch long .....							4			
-2A	46 19720 0070	. GASKET, Upper .....							1			
-3	1972-48	. MOUNT, Lamp housing .....							1			
		ATTACHING PARTS										
-4	61 40105 0416	. SCREW, Flat fillister head, stainless steel, 4-48 x 1/4 inch long .....							4			
-5	61 72402 0004	. LOCKWASHER, Light, stainless steel, blackened, for size 4 screw .....							4			
		ATTACHING PARTS										
-5A	1426-66	. BUSHING, Insulating .....							1			
-5B	46 19720 0060	. GASKET, Lower .....							1			
-6	85 19720 0100	. HOUSING ASSEMBLY, Index (See figure 10) .....							1			
		ATTACHING PARTS										
-7	61 40105 0624	. SCREW, Flat fillister head, stainless steel, blackened, 6-40 x 3/8 inch long .....							6			
-8	61 72402 0006	. LOCKWASHER, Light, stainless steel, blackened, for size 6 screw .....							6			
		ATTACHING PARTS										
-9	X1728	. RING, Sealing .....							1			
-10	85 19720 0080	. MOUNT ASSEMBLY, Index prism (See figure 10) .....							1			
		ATTACHING PARTS										
-11	X5200-2-1	. SCREW, Cap .....							2		A	
	61 42805 0216	. SCREW, Cap .....							2		B	
-12	1471C998	. DESICCATOR ASSEMBLY (See figure 11) .....							1			
		ATTACHING PART										
-13	61 40205 0314	. SCREW, Flat head, stainless steel, 3-56 x 7/32 inch long .....							2			
-14	1471C904	. COVER ASSEMBLY, Left (See figure 11) .....							1			
		ATTACHING PARTS										
-15	61 40105 0620	. SCREW, Flat fillister head, stainless steel, 6-40 x 5/16 inch long .....							4			
-16	61 72402 0006	. LOCKWASHER, Light, stainless steel, blackened, for size 6 screw .....							4			
		ATTACHING PARTS										
-17	X1731	. RING, Sealing .....							1		A	
-18	*1471C965	. COUNTER AND COUPLING ASSEMBLY (Superseded by 85 19720 0310) .....							1			
	85 19720 0310	. COUNTER AND COUPLING ASSEMBLY (See figure 7) (Superseded 1471C965) .....							1			
		ATTACHING PART										
-19	1416-26	. SCREW .....							2			
		ATTACHING PARTS										
-20	1045-16B	. DISC, Floating .....							1			
-21	46 19720 0020	. GASKET .....							1			
-22	1471C658	. SCREW, Sealing .....							1			
-23	AN6227B6	. RING, Sealing .....							1			
-24	87 19720 0030	. COVER ASSEMBLY, Right (See figure 13) .....							1			
		ATTACHING PARTS										
-25	61 40105 0620	. SCREW, Flat fillister head, stainless steel, 6-40 x 5/16 inch long .....							4			
-26	61 72402 0006	. LOCKWASHER, Light, stainless steel, blackened, for size 6 screw .....							4			
		ATTACHING PARTS										
-27	X1731	. RING, Sealing .....							1			
-28	85 19720 0070	. EYEPIECE ASSEMBLY (See figure 11) .....							1		A	
	85 19721 0060	. EYEPIECE ASSEMBLY (See figure 11) .....							1		B	
-29	X1710	. RING, Sealing .....							1			
-30	85 19720 0060	. LENS ASSEMBLY, Field (See figure 11) .....							1			
		ATTACHING PART										
-31	61 40205 0416	. SCREW, Flat head stainless steel, 4-48 x 1/4 inch long .....							6			
		ATTACHING PARTS										
-32	X1710	. RING, Sealing .....							1			
-33	85 19720 0150	. MIRROR UNIT, Pendulous (See figure 12) .....							1		A	
	85 19721 0050	. MIRROR UNIT, Pendulous (See figure 12) .....							1		B	
-34	X1710	. RING, Sealing .....							1			
-35	*No Number	. BODY ASSEMBLY (See figure 9) .....							1			

\* Non Procurable

Section II  
Group Assembly Parts List

T.O. 5N10-4-2-4

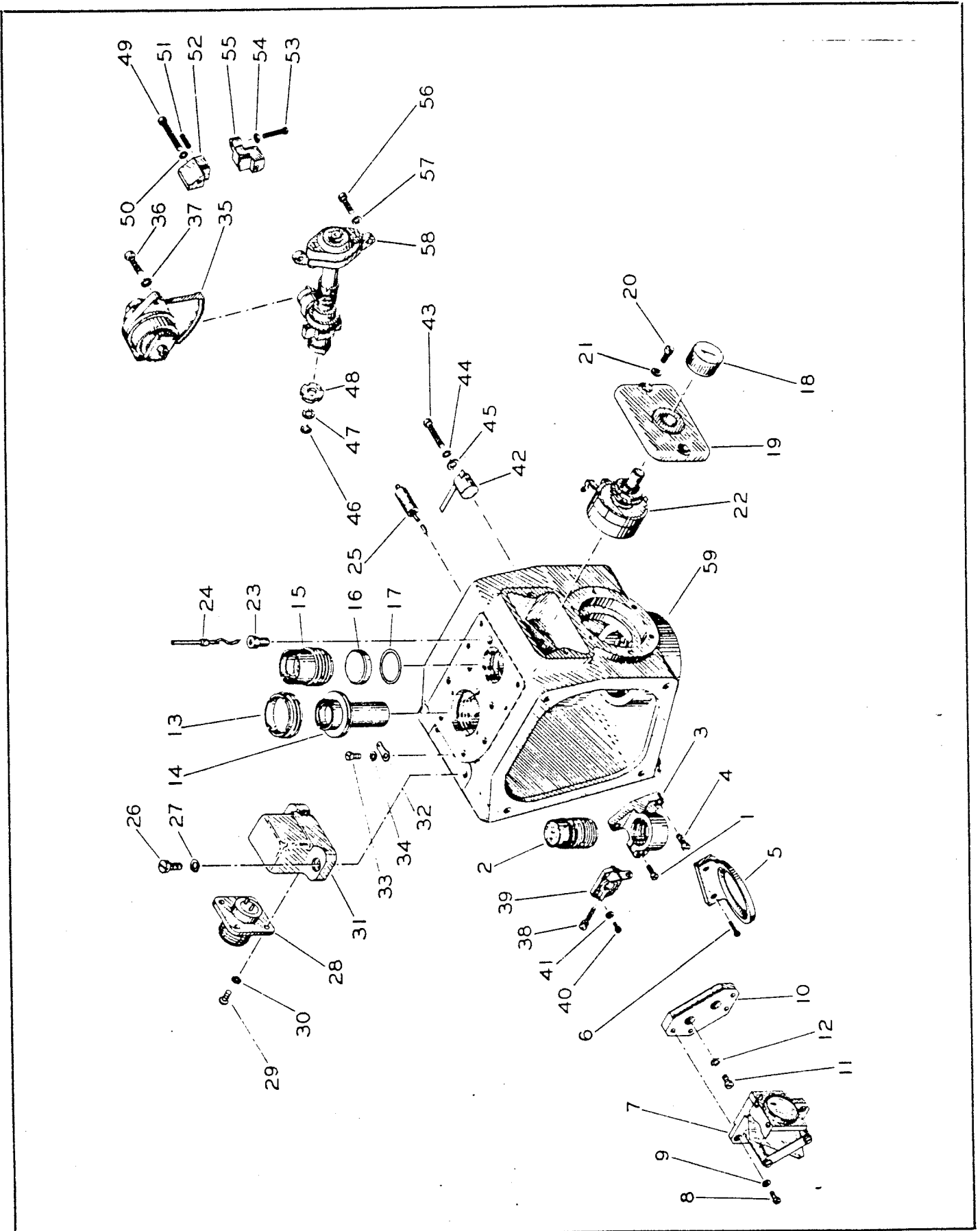


Figure 9. Body Assembly

FIG. & INDEX NO.	PART NUMBER	DESCRIPTION							UNITS PER ASSY.	USABLE ON CODE
		1	2	3	4	5	6	7		
<b>BODY ASSEMBLY</b>										
		BODY ASSEMBLY (See figure 8-35) .....							Ref	
9-	No Number	. . . . .							1	
-1	FFIL208SS8	. . . . .							1	
-2	1972-906	. . . . .							1	
-3	1471C639	. . . . .							1	
ATTACHING PART										
-4	FFIL310SS8	. . . . .							2	
. . . . .										
-5	1471B948	. . . . .							1	
ATTACHING PART										
-6	FFIL110SS8	. . . . .							2	
-7	85 19720 0040	. . . . .							1	
ATTACHING PARTS										
-8	FFIL208B	. . . . .							4	
-9	KL2SS4PX (AN)	. . . . .							4	
. . . . .										
-10	52 19720 0020	. . . . .							1	
ATTACHING PARTS										
-11	FFIL306SS8	. . . . .							2	
-12	KL3SS4PX (AN)	. . . . .							2	
. . . . .										
-13	45 19720 0010	. . . . .							1	
-14	85 19720 0030	. . . . .							1	
-15	1972-907	. . . . .							1	
-16	1471C642	. . . . .							1	
-17	1471C643	. . . . .							1	
9-	1471C902	. . . . .							1	
-18	1045-909	. . . . .							1	
-19	1471C645	. . . . .							1	
ATTACHING PARTS										
-20	FFIL408SS8	. . . . .							2	
-21	KL4SS4PX (AN)	. . . . .							2	
. . . . .										
-22	1471C410	. . . . .							1	
-23	1471C66	. . . . .							1	
-24	1471C930	. . . . .							1	
-25	1471C955	. . . . .							1	
9-	1471C912	. . . . .							1	
ATTACHING PARTS										
-26	FFIL610SS8	. . . . .							2	
-27	KL6SS4PX (AN)	. . . . .							2	
. . . . .										
-28	AN3102A10SL4P	. . . . .							1	
ATTACHING PARTS										
-29	RH408SS8	. . . . .							4	
-30	KL4SS4PX (AN)	. . . . .							4	
. . . . .										
-31	1471C644	. . . . .							1	
-32	33578	. . . . .							1	
-33	FFIL206N	. . . . .							1	
-34	KR2B-N	. . . . .							1	
-35	1471C910	. . . . .							1	
ATTACHING PARTS										
-36	FFIL614Cd	. . . . .							2	
-37	KL6SS4PX (AN)	. . . . .							2	
. . . . .										
-38	1471C646	. . . . .							2	
-39	1471B925	. . . . .							1	
ATTACHING PARTS										
-40	FFIL105B	. . . . .							4	
-41	1287-48	. . . . .							4	
. . . . .										
-42	1471C942	. . . . .							1	
ATTACHING PARTS										
-43	FFIL420SS8	. . . . .							1	
-44	KL4SS4PX (AN)	. . . . .							1	
-45	WR4SS	. . . . .							1	
. . . . .										
-46	5133-12	. . . . .							1	
-47	1045-10C	. . . . .							1	
-48	1045-16B	. . . . .							1	
-49	FFIL424Cd	. . . . .							2	
-50	KL4SS4PX (AN)	. . . . .							2	
-51	X5100-98-1	. . . . .							2	
-52	1471C630	. . . . .							1	
-53	FFIL215SS8	. . . . .							1	
-54	N2N	. . . . .							1	
-55	1471C631	. . . . .							1	
-56	FFIL412Cd	. . . . .							2	
-57	KL4SS4PX (AN)	. . . . .							2	
-58	1471C927	. . . . .							1	
-59	1471C1C	. . . . .							1	

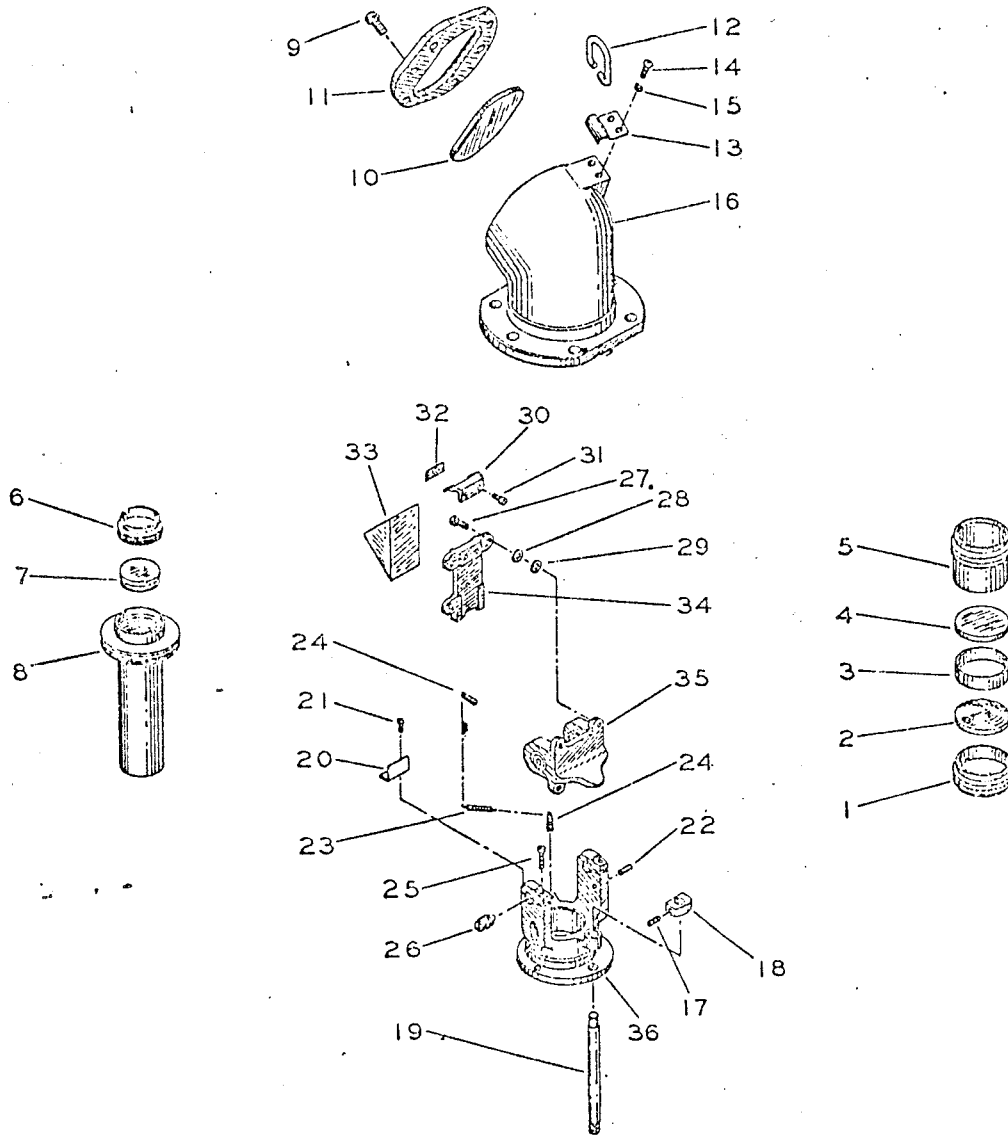


Figure 10. Condenser Lens Assembly, 1st and 2nd Objective Lens Assembly, Index Housing Assembly, and Index Prism Mount Assembly

FIG. & INDEX NO.	PART NUMBER	1	2	3	4	5	6	7	DESCRIPTION	UNITS PER ASSY.	USABLE ON CODE
<b>CONDENSER LENS ASSEMBLY, 1st and 2nd OBJECTIVE LENS ASSEMBLY, INDEX HOUSING ASSEMBLY, AND INDEX PRISM MOUNT ASSEMBLY</b>											
10-	No Number	CONDENSER LENS ASSEMBLY, 1st and 2nd OBJECTIVE LENS ASSEMBLY, INDEX HOUSING ASSEMBLY, AND INDEX PRISM MOUNT ASSEMBLY							NP		
10-	1972-007	CONDENSER LENS ASSEMBLY (See figure 0-15)							Ref		
-1	1972-21	RING, Lock							1		
-2	1045-115	LENS, Condenser							1		
-3	1045-71	SPACER, Lens							1		
-4	1045-115	LENS, Condenser							1		
-5	1972-64	BARREL							1		
10-	85 19720 0080	LENS ASSEMBLY, 1st and 2nd objective (See figure 3-14)							Ref		
-6	45 19720 0020	NUT, Lock, 1st objective							1		
-7	76 19720 0010	LENS, Objective, 1st component							1		
-8	No Number	CELL AND LENS ASSEMBLY							NP		
10-	85 19720 0100	HOUSING ASSEMBLY, Index (See figure 8-6)							Ref		
10-	85 19720 0110	WINDOW ASSEMBLY							1		
ATTACHING PART											
-9	FH208SSSPX	SCREW, Flat head, stainless steel, blackened, 2-64 x 1/4 in. long							6		
-10	27 19720 0010	WINDOW, Objective							1		
-11	52 19720 0090	RETAINER, Window							1		
-12	58 19720 0010	RING							1		
-13	56 19720 0050	STRAP, Ring							1		
ATTACHING PARTS											
-14	RH408SSSPX	SCREW, Round head, stainless steel, blackened, 4-48 x 1/4 in. long							2		
-15	KL4SS4PX (AN)	LOCKWASHER, Light, stainless steel, blackened, for size 4 screw							2		
-16	50 19720 0020	HOUSING, Index							1		
10-	85 19720 0080	MOUNT ASSEMBLY, Index prism (See figure 8-10)							Ref		
-17	1046-42	SCREW, Set							1		
-18	52 19720 0070	GUIDE, Rod							1		
-19	85 19720 0090	ROD ASSEMBLY, Push							1		
-20	56 19720 0040	SHIELD, Light							1		
ATTACHING PART											
-21	X30	SCREW							2		
-22	X4301-1	ROLL PIN							1		
-23	1045-146C	SPRING, Prism							1		
-24	1045-145	ANCHOR, Spring							2		
-25	FFIL108B	SCREW, Flat fillister head, brass, 1-72 x 1/4 in. long							2		
-26	1471B144B	PIVOT							2		
-27	1045-143	SCREW, Objective adjustment							3		
-28	1045-411	WASHER, Spring							AR		
-29	1287-48	WASHER							3		
10-	1471B949	PRISM ASSEMBLY, Index							1		
-30	1045-138	CLIP, Prism							1		
ATTACHING PART											
-31	FFIL004B	SCREW, Flat fillister head, 0-50 x 1/8 in. long							2		
-32	No Number	SPACER, Black fish paper							NP		
-33	1045-123	PRISM, 90° Index							1		
-34	1471B137B	HOLDER, Prism							1		
-35	1471B938B	MOUNT AND BALL ASSEMBLY, Prism							1		
-36	52 19720 0060	YOKE							1		

Section II  
Group Assembly Parts List

T.O. 5N10-4-2-4

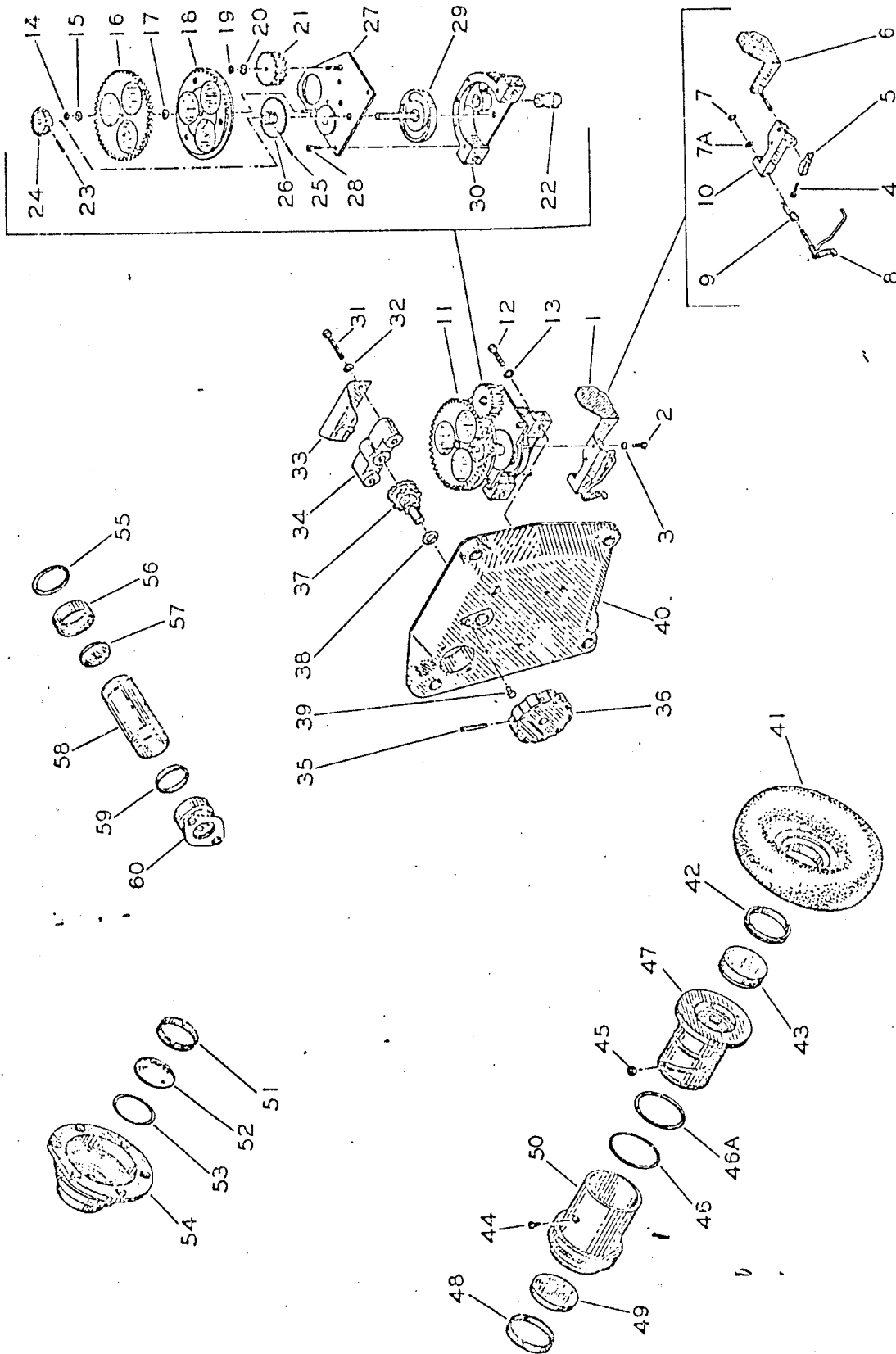


Figure 11. Left Cover, Eyepiece, Field Lens and Desiccator Assemblies

FIGURE & INDEX NO.	PART NUMBER	DESCRIPTION	UNITS PER ASSY.	USABLE ON CODE
<b>LEFT COVER, EYEPIECE, FIELD LENS AND DESICCATOR ASSEMBLIES</b>				
11-	*No Number	LEFT COVER, EYEPIECE, FIELD LENS AND DESICCATOR ASSEMBLIES.....	1	
11-	1471C904	COVER ASSEMBLY, Left (See figure 8-14) .....	Ref	
-1	1471B916	SHUTTER ASSEMBLY, Optical .....	1	
<b>ATTACHING PARTS</b>				
-2	FFIL106Cd	SCREW, Flat fillister head, cadmium plated, 1-72 x 3/16 inch long .....	2	
-3	KH1B-Cd	LOCKWASHER, Cadmium plated for size 1 screw .....	2	
-4	FFIL008B	SCREW, Flat fillister head, black, 6-80 x 1/4 in. long .....	1	
-5	1426-41	FORK, Shutter .....	1	
-6	1426-917	SHUTTER AND SHAFT ASSEMBLY, Light .....	1	
-7	5133-6	RING, Retaining (WKI) .....	1	
-7A	79 14711 0101	WASHER .....	AR	
-8	1471B918	SHAFT ASSEMBLY, Lever .....	1	
-9	1426-48	SPRING, Shutter .....	1	
-10	1426-40C	MOUNT, Optical shutter .....	1	
-11	*No Number	UPPER AND LOWER FILTER ASSEMBLIES .....	1	
<b>ATTACHING PARTS</b>				
-12	FFIL312Cd	SCREW, Flat fillister head, cadmium plated, 3-56 x 3/8 inch long .....	2	
-13	KL3SS4B (AN)	LOCKWASHER, Stainless steel, blackened, for size 3 screw .....	2	
-14	5133-6	RING, Retaining (WKI) .....	1	
-15	1045-109-1	WASHER .....	1	
-16	1045-918	FILTER ASSEMBLY, Upper .....	1	
-17	1045-109-1	WASHER .....	1	
-18	1045-917C	FILTER ASSEMBLY, Lower .....	1	
-19	5133-6	RING, Retaining (WKI) .....	1	
-20	1045-109-1	WASHER .....	1	
-21	1045-93	PINION, Intermittent .....	1	
-22	1045-919	BODY ASSEMBLY, Detent .....	1	
-23	20632	PIN, Taper (DXN) .....	1	
-24	1471C653	GEAR, Bevel .....	1	
-25	20632	PIN, Taper (DXN) .....	1	
-26	1045-97	GEAR .....	1	
-27	1471B920	PLATE ASSEMBLY, Mounting .....	1	
<b>ATTACHING PART</b>				
-28	FFIL106Cd	SCREW, Flat fillister head, cadmium plated, 1-72 x 3/16 inch long .....	4	
-29	1471C915	DISC AND SHAFT ASSEMBLY, Index .....	1	
-30	1471C100	HOUSING .....	1	
-31	FFIL320SS8	SCREW, Flat fillister head, stainless steel, 3-56 x 3/8 inch long .....	2	
-32	KL3SS4B (AN)	LOCKWASHER, Stainless steel, blackened, for size 3 screw .....	2	
-33	1471C657	SPRING, Detent .....	1	
-34	1471C655	BRACKET, Bearing .....	1	
-35	X1027-002	PIN, Taper .....	1	
-36	1471C652B	KNOB, Filter .....	1	
-37	1471C917	SHAFT AND GEAR ASSEMBLY, Filter knob .....	1	
-38	AN6227B3	RING, Sealing .....	1	
-39	1471C656	PIN, Stop .....	1	
-40	1471C8D	COVER, Left .....	1	
-41	85 19720 0180	MOUNT, Eyeguard assembly .....	1	
11-	85 19720 0070	EYEPIECE ASSEMBLY (See figure 8-28) .....	Ref	A
	85 19721 0080	EYEPIECE ASSEMBLY (See figure 8-28) .....	Ref	B
-42	1045-80	RING, Lock .....	1	
-43	1045-110	LENS, Eye .....	1	
-44	FH105SS8	SCREW, Flat head, stainless steel, 1-72 x 5/32 inch long .....	1	A
	61 30205 0108	SCREW, Flat head, stainless steel, 1-64 x 1/8 inch long .....	1	B
-45	1471B78	SHOE .....	1	
-46	74 32401 1192	GASKET, Sealing .....	1	B
-46A	X1709	RING, Sealing .....	1	
-47	1471C79B	MOUNT, Eye lens .....	1	A
	52 19721 0010	MOUNT, Eye lens .....	1	B
-48	1471C77	RING, Lock .....	1	
-49	1045-111	LENS, Collective eye .....	1	
-50	1471C76B	MOUNT, Eyepiece .....	1	
11-	85 19720 0060	LENS ASSEMBLY, Field (See figure 8-30) .....	Ref	
-51	1471C75	RING, Lock .....	1	
-52	28 19720 0040	LENS, Field .....	1	
-53	56 19720 0031	RING, Stop .....	1	
-54	1471C74	MOUNT, Field lens .....	1	
11-	1471C998	DESICCATOR ASSEMBLY (See figure 8-12) .....	Ref	
-55	AN6227-10	RING, Sealing .....	1	
-56	1471C709	RING, Retaining .....	1	
-57	1471C708B	FILTER .....	1	
-58	1471C707	CARTRIDGE, Desiccant .....	1	
-59	1471C706	SPACER .....	1	
-60	*No Number	FLANGE AND GLASS ASSEMBLY .....	1	

\* Non Procurable

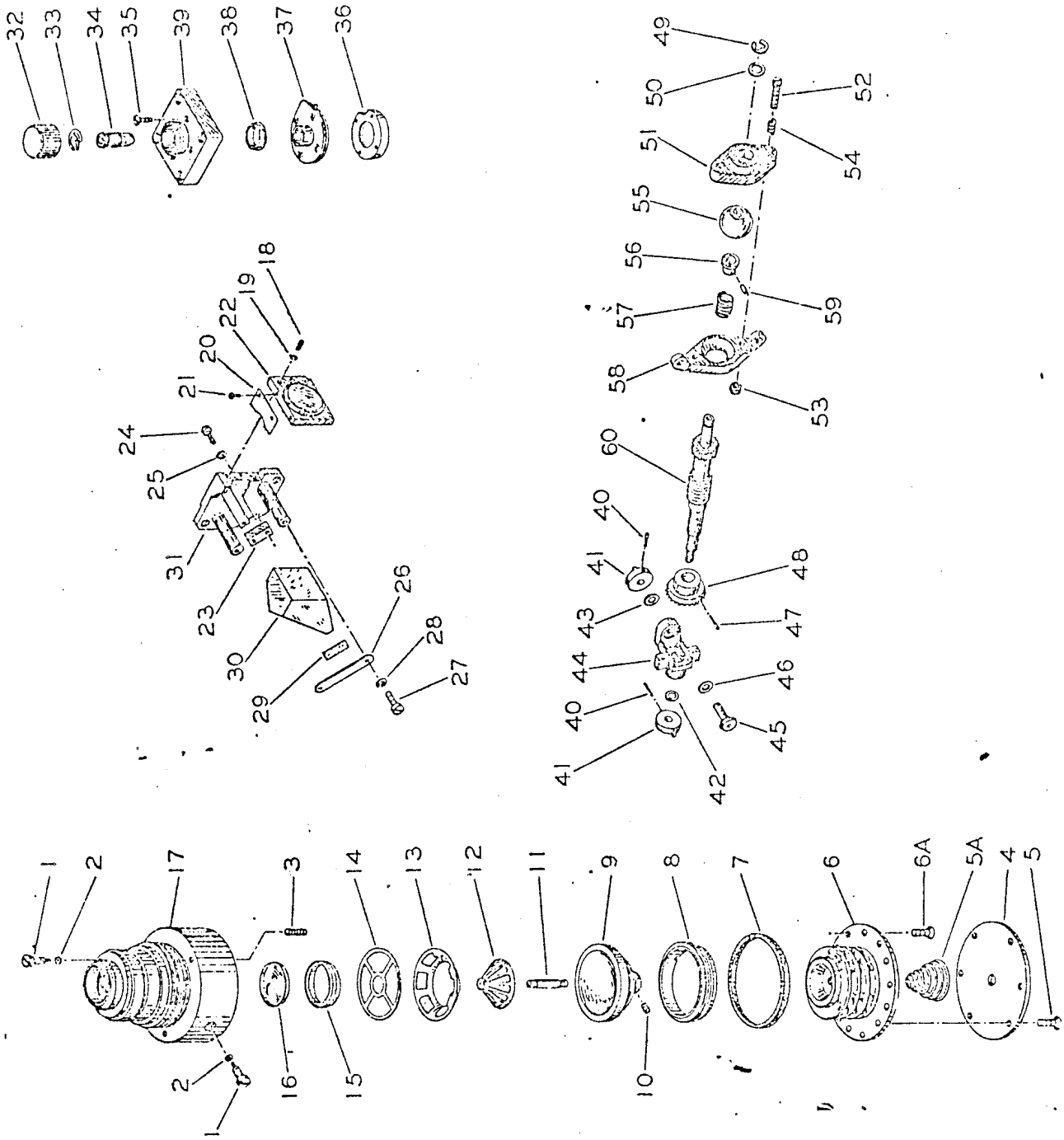


Figure 12. Mirror Unit, Prism and Lens Mount Assembly, Lcomp and Housing Assembly, and Main Shaft Assembly



FIGURE & INDEX NO.	PART NUMBER	1	2	3	4	5	6	7	DESCRIPTION	UNITS PER ASSY.	USABLE ON CODE	
<b>MIRROR UNIT, PRISM AND LENS MOUNT ASSEMBLY, LAMP AND HOUSING ASSEMBLY, AND MAIN SHAFT ASSEMBLY</b>												
12-	*No Number	MIRROR UNIT, PRISM AND LENS MOUNT ASSEMBLY, LAMP AND HOUSING							1			
		ASSEMBLY AND MAIN SHAFT ASSEMBLY										
12-	85 19720 0150	MIRROR UNIT, Pendulous (See figure 8-33)							Ref		A	
	85 19721 0050	MIRROR UNIT, Pendulous (See figure 8-33)							Ref		B	
-1	45 19720 0061	SCREW, Sealing							2			
-2	1820	RING, Sealing (LIR)							2			
12-	No Number	DC 200 Fluid, 5 centistokes (DCR)							AR		A	
12-	No Number	DC 200 Fluid, 7 centistokes (DCR)							AR		B	
-3	AHS316SS8	SCREW, Flat point, Allen head socket, stainless steel, 3-56 x 1/2 inch long							3			
-4	56 19721 0010	PLATE, Cover							1			
		ATTACHING PART										
-5	61 40205 0318	SCREW, Flat head, stainless steel, 3-56 x 9/32 inch long							3			
		ATTACHING PART										
-5A	58 19721 0020	SPRING, Conical							1			
-6	85 19720 0210	BELLOWS AND SUPPORT ASSEMBLY							1			
		ATTACHING PART										
-6A	61 40205 0318	SCREW, Flat head, stainless steel, 3-56 x 9/32 inch long							6			
		ATTACHING PART										
-7	GRC5133-127	RING, Sealing (GOS)							1			
-8	1045-60	RING, Lock							1			
-9	1045-59	HOUSING, Inner							1			
-10	865D38	SCREW, Set							2			
-11	85 19721 0080	POST ASSEMBLY							1			
-12	85 19721 0070	MIRROR AND SKIRT ASSEMBLY							1			
-13	56 19720 0080	SKIRT, Stop							1			
-14	1045-58	RETAINER							1			
12-	85 19720 0190	HOUSING ASSEMBLY							1			
-15	45 19720 0050	RING, Lock							1			
-16	1045-113B	LENS, Horizon							1			
-17	50 19720 0062	HOUSING							1			
12-	86 19720 0040	MOUNT ASSEMBLY, Prism and lens (See figure 9-7)							Ref		A	
	85 19720 0360	MOUNT ASSEMBLY, Prism and lens (See figure 9-7)							Ref		B	
12-	85 19720 0050	MOUNT ASSEMBLY, Third objective lens							1		A	
	85 19720 0350	MOUNT ASSEMBLY, Third objective lens							1		B	
		ATTACHING PARTS										
-18	61 40112 0116	SCREW, Flat fillister head, brass, blackened, 1-72 x 1/4 inch long							2			
-19	61 70102 0001	LOCKWASHER, light, stainless steel, blackened for size 1 screw							2			
		ATTACHING PARTS										
-20	56 19720 0020	SHIELD, Light							1			
		ATTACHING PART										
-21	X30	SCREW							2			
		ATTACHING PARTS										
-22	*No Number	MOUNT AND LENS ASSEMBLY							1			
-23	52 19720 0040	RETAINER, Prism							1			
		ATTACHING PARTS										
-24	61 40112 0116	SCREW, Flat fillister head, brass, blackened, 1-72 x 1/4 inch long							2			
-25	61 70102 0001	LOCKWASHER, Light, stainless steel, blackened, for size 1 screw							2			
		ATTACHING PARTS										
-26	56 19720 0010	STRAP, Prism retaining							1			
		ATTACHING PARTS										
-27	61 40112 0212	SCREW, Flat fillister head, brass, blackened, 2-64 x 3/16 inch long							2			
-28	61 72402 0002	LOCKWASHER, Light, stainless steel, blackened, for size 2 screw							2			
		ATTACHING PARTS										
-29	46 19720 0010	GASKET, Prism							1			
-30	28 19720 0050	PRISM, Penta-roof							1			
-31	52 19720 0031	PLATE, Prism mount							1			
12-	85 19720 0120	LAMP AND HOUSING ASSEMBLY (See figure 8-1)							Ref			
-32	1471-501	CAP, Bulb							1			
-33	58 14710 0010	SPRING, Contact							1			
-34	AN8140-327	LAMP							1			
-35	PH009SSSPX	SCREW, Flat head, stainless steel, blackened, 0-80 x 9/32 inch long							4			
-36	1972-46	RING, Mounting							1			
-37	85 19720 0130	CONTACT AND INSULATOR ASSEMBLY							1			
-38	1972-39	BUSHING, Insulating							1			
-39	50 19720 0030	HOUSING, Lamp							1			
12-	1471C927	SHAFT ASSEMBLY, Main (See figure 9-58)							Ref			
-40	20632	PIN, Taper (DXN)							2			
-41	1045-15C	COUPLING							2			
-42	1045-18C1	SPACER							1			
-43	1045-19C	SPACER							1			
-44	1471C10	BLOCK, Bearing							1			
-45	1471C20	PINION							1			
-46	1045-18C	SPACER							1		AR	
-47	X775	PIN, Taper							1			
-48	1471-21	GEAR							1			
-49	5133-18C	RING, Retaining (WK1)							1			
-50	1471C629	SPACER							1			
-51	50 14712 0011	RETAINER, Bushing							1			
		ATTACHING PARTS										
-52	1471C715	SCREW							2			
-53	X4800-9-2	NUT, Stop, elastic							2			
		ATTACHING PARTS										
-54	1471C628	SPRING							2			
-55	1471C23	BUSHING, Ball							1			
-56	1471C24	COLLAR, Spring							1			
-57	1471C25	SPRING							1			
-58	1471C627C	MOUNTING, Bushing							1			
-59	1471C29	PIN, Spring collar							1			
-60	1471C22	SHAFT, Main							1			

\* Non Procurable

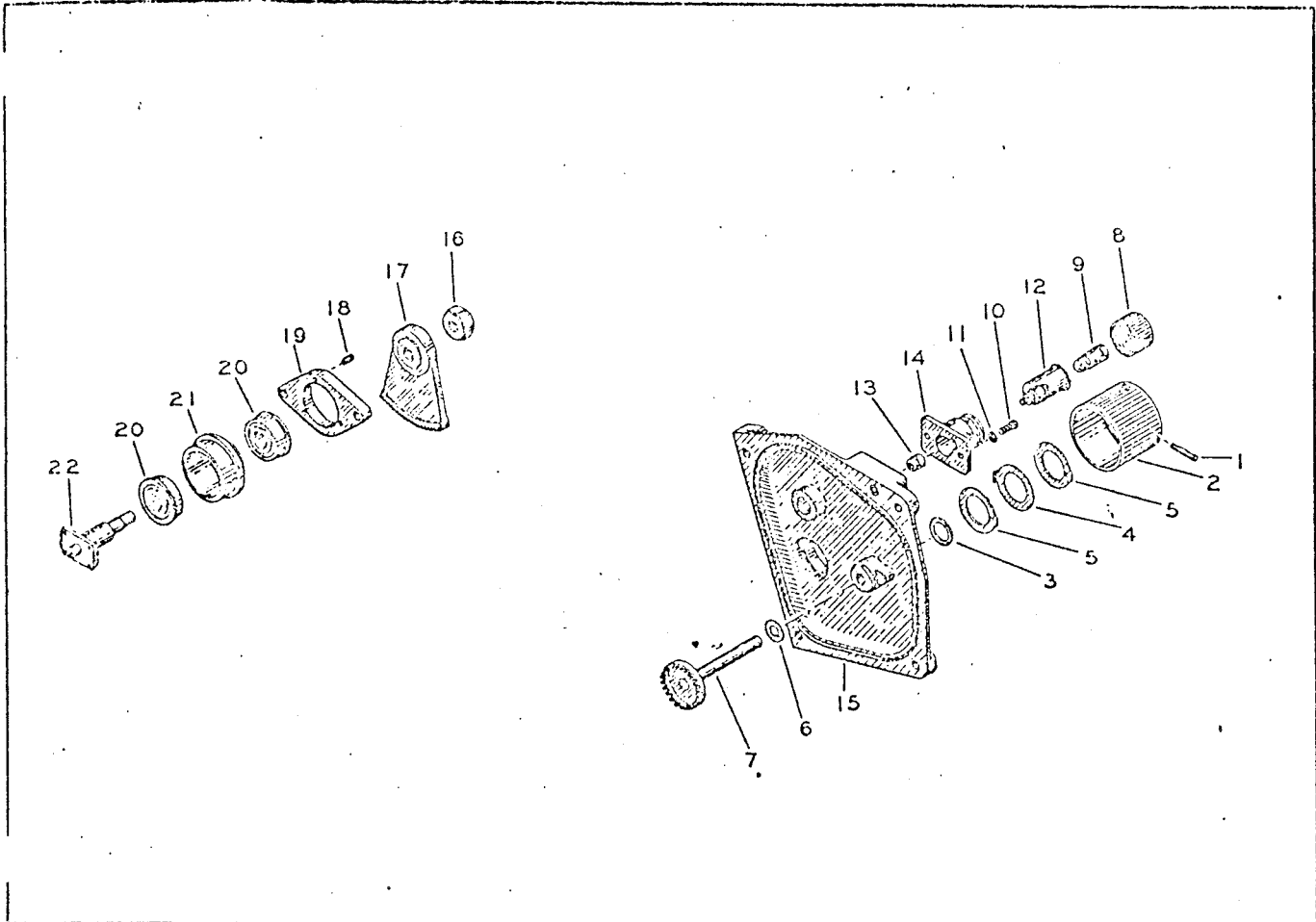


Figure 13. Right Cover Assembly and Axle Assembly

FIGURE & INDEX NO.	PART NUMBER	1	2	3	4	5	6	7	DESCRIPTION	UNITS PER ASSY.	USABLE ON CODE
<b>RIGHT COVER ASSEMBLY AND AXLE ASSEMBLY</b>											
13-	*No Number								RIGHT COVER ASSEMBLY AND AXLE ASSEMBLY.....	1	Ref
13-	6719720 0030								COVER ASSEMBLY, Right (See figure 8-24) .....	1	
-1	X775								PIN, Taper .....	1	
-2	1426-915								KNOB AND PIN ASSEMBLY .....	1	
-3	AN6227B3								RING, Sealing .....	1	
-4	1045-37B								WASHER, Stop (as required) (0.026 inch thick) .....	approx. 17	
	1636-113								WASHER, Stop (as required) (0.031 inch thick) .....	approx. 6	
-5	1045-36C								WASHER, Stop .....	2	
-6	1471B563								SHIM .....	AR	
-7	1471C914								SHAFT AND GEAR ASSEMBLY, Knob .....	1	
-8	1471-924								CAP AND CONTACT ASSEMBLY, Bulb .....	1	
-9	AN3140-327								LAMP .....	1	
-10	FF1L208SS8								SCREW, Flat fillister head, stainless steel, 2-64 x 1/4 inch long .....	2	
-11	KL2SS4PX (AN)								LOCKWASHER, Light, stainless steel, blackened for size 2 screw .....	2	
-12	1471C939								BUSHING AND WIRE ASSEMBLY, Contact .....	1	
-13	1471C635								BUSHING, Insulating .....	1	
-14	6519720 0220								HOUSING ASSEMBLY, Bulb .....	1	
-15	1471C913								COVER AND BEARING ASSEMBLY, Right .....	1	
13-	1471C910								AXLE ASSEMBLY (See figure 9-35) .....	Ref	
-16	1045-409								NUT .....	1	
-17	1045-6								SECTOR .....	1	
-18	X5100-98-1								SCREW, Set, stainless steel, blackened, 2-64 x 3/16 inch long .....	8	
-19	1471B556								PLATE, Axle mounting .....	1	
-20	**FEDD								BEARING, Ball (FAP) .....	2	
-21	**1471B555								HOUSING, Bearing .....	1	
-22	**1471B554								AXLE .....	1	

Non Procurable.

\*\*Must be ordered together.

<b>SECTION III</b> <b>NUMERICAL INDEX</b>
----------------------------------------------

PART NUMBER	STOCK NO. CLASS CODE	SERIAL OR PART NO.	FIG. AND INDEX NO.	QTY. PER ART.	SOURCE CODE	PART NUMBER	STOCK NO. CLASS CODE	SERIAL OR PART NO.	FIG. AND INDEX NO.	QTY. PER ART.	SOURCE CODE
AVERAGER YOKE AND INDEX ASSEMBLY AND MOUNTING PLATE ASSEMBLY			4-	NP		UPPER AND LOWER FILTER ASSEMBLIES			11-11	1	
BALANCE ASSEMBLY			5-4	NP		YOKE AND DRUM ASSEMBLY			4-33	NP	
BODY ASSEMBLY			8-35	1		AHS316SS8			12-3	3	
CELL AND LENS ASSEMBLY			9-	Ref		AN3102A10SL4P			9-28	1	
CLOCK MECHANISM, CONTROL UNIT, PLATE, SHAFT AND CLUTCH, DIAL PLATE AND GEAR ASSEMBLIES			10-8	NP		AN3140-327			12-34	2	
CONDENSER LENS ASSEMBLY, 1st AND 2nd OBJECTIVE LENS ASSEMBLY, INDEX HOUSING ASSEMBLY, AND INDEX PRISM MOUNT ASSEMBLY			5-	NP		AN6227-10			13-9		
COVER AND PIN ASSEMBLY			6-15	NP		AN6227B1			11-55	1	
DC200 FLUID, 5 CENTISTOKES			12-	AR		AN6227B3			6-13	2	
DC200 FLUID, 7 CENTISTOKES			12-	AR		AN6227B6			7-8		
FLANGE AND GLASS ASSEMBLY			11-60	1		AN6227B9			6-6	3	
GEAR AND BUSHING ASSEMBLY			7-24	1		FFIL004B	6325-5305-038-8032		11-38		
GEAR AND DISC ASSEMBLY			4-14	NP		FFIL005Cd			13-3		
HOUSING AND BEARING ASSEMBLY, REAR			7-10	1		FFIL006Cd	6325-5305-215-6165		13-8		
HUB AND GEAR ASSEMBLY			4-17	NP		FFIL008B	6325-5305-286-3839		2-4	2	
LEFT COVER, EYE-PIECE, DESICCATOR, AND FIELD LENS ASSEMBLY			11-	1		FFIL103Cd			11-23		
MIRROR UNIT, PRISM AND LENS MOUNT ASSEMBLY, LAMP AND HOUSING ASSEMBLY, AND MAIN SHAFT ASSEMBLY			12-	1		FFIL104Cd	6325-5305-214-1481		7-7	1	
MOUNT AND LENS ASSEMBLY			12-22	1		FFIL105B	6325-5305-214-1482		10-31	2	
PLATE AND BUSHING ASSEMBLY, DIAL			5-67	NP		FFIL106Cd	6325-5305-214-1483		3-38	8	
RIGHT COVER ASSEMBLY, AND AXLE ASSEMBLY			13-	1		FFIL108B			5-33	1	
SEXTANT, Hand Held (less averager)			2-10	1		FFIL110SS8	6325-5305-285-8665		11-4	1	
SPACER, Black Fish Paper			10-32	NP		FFIL204	6325-5305-639-3184		3-34	2	
						FFIL204Cd			8-36	3	
						FFIL205	6325-5305-214-0648		9-40	4	
						FFIL205Cd	6325-5305-207-7932		11-2	6	
						FFIL206N	6325-5305-090-2206		11-28		
						FFIL207Cd			10-25	2	
						FFIL208B			9-6	2	
						FFIL208SS8	6325-5305-286-3837		4-2	2	
						FFIL209	6325-5305-207-7933		4-2	2	
						FFIL212			5-30	1	
						FFIL215SS8			5-11	1	
						FFIL306SS8	6325-5305-298-3373		4-45	2	
						FFIL307Cd	6325-5305-214-1499		9-33	1	
						FFIL309Cd	6325-5305-216-3489		8-22	3	
						FFIL309SS8			9-8	4	
						FFIL310SS8	6325-5305-298-4618		9-1	3	
						FFIL312Cd	6325-5305-298-3377		13-10		
						FFIL314Cd			4-27	2	
						FFIL320SS8			4-28	1	
						FFIL408SS8	6325-5305-214-1510		9-53	1	
						FFIL412Cd			6-8	3	
						FFIL420SS8			9-11		
						FFIL424Cd			5-35	2	
						FFIL610SS8			3-5	3	
						FFIL614Cd			6-1	1	
						FFIL614SS8PX	6325-5305-298-1182		9-4	2	
						FH006	6325-5305-537-1297		11-12	2	
						FH009SS8PX	6325-5305-639-5402		3-10	4	
						FH105SS8	6325-5305-216-3492		11-31	2	
						FH205Cd			9-20	2	
						FH208SS8PX			9-56	2	
						F5DD			9-43	1	
						GRC5133-127			9-49	2	
									9-26	2	
									9-36	2	
									8-2	4	
									4-34	2	
									12-35	4	
									11-44	1	
									4-52	4	
									10-9	6	
									13-20	2	
									12-7	1	

Section III  
Numerical Index

T.O. 5N10-4-2-4

PART NUMBER	STOCK NO.		FIG. AND INDEX NO.	QTY. PER ART.	SOURCE CODE	PART NUMBER	STOCK NO.		FIG. AND INDEX NO.	QTY. PER ART.	SOURCE CODE
	CLASS CODE	SERIAL OR PART NO.					CLASS CODE	SERIAL OR PART NO.			
KH1BCd			11-3	2		1045-19C			9-47	2	
KL2HZ (AN)	6325-5310-550-4655		2-23	3					12-43		
KS2SS4PX (AN)	6325-5310-637-2492		9-9	4		1045-1925	6225-6605-346-1307		3-45	1	
			13-11						5-51	Ref	
KL3B	6325-5310-209-2841		3-11	4		1045-1940B			5-50	NP	
KL3SS4B (AN)			11-13	4		1045-243	6225-5305-298-8419		5-6	8	
			11-32			1045-244D			5-10	1	
KL3SS4PX (AN)			9-12	2		1045-245	6225-6605-346-1309		5-18	1	
KL4SS4PX (AN)	6325-5310-639-5002		9-21	13		1045-246	6225-6605-346-1312		5-7	1	
			9-30			1045-247B			3-13	2	
			9-44			1045-248C			5-13	1	
			9-50			1045-251D			4-48	1	
			9-57			1045-252	6225-6605-294-2428		4-50	1	
			10-15			1045-256B			4-49	42	
KL6SS4PX (AN)	6325-5310-508-9730		3-3	8					5-55		
			9-27			1045-262B	6225-6605-318-6751		4-15	2	
			9-37						4-18		
KR2B-N	6325-5310-641-9298		9-34	1		1045-278B			4-11	1	
N2N	6325-5310-208-9569		9-54	1		1045-279			4-10	1	
RH408SS8			9-29	6		1045-280	6225-6650-443-2806		4-9	1	
			10-14			1045-281B	6225-6605-334-7277		4-12	1	
R2S5358J-P17D			4-39	4		1045-283D			4-30	1	
			5-59			1045-285			4-38	1	
S052184-2			2-11	1		1045-286			4-35	1	
WR4SS			9-45	1		1045-290B	6225-6605-334-7278		4-25	1	
X1027-003			11-35	1		1045-294			4-24	2	
X1282	6325-5305-090-0556		5-39	1					5-44		
X1690	6225-6605-599-6260		3-12	1		1045-295B			4-3	1	
X1709	R6605-526-6464WK01		11-46A	1		1045-296C			4-4	1	
X1710	6225-6605-599-6267		8-29	3		1045-299B	6225-6605-329-0690		5-61	1	
			8-32			1045-300			5-60	1	
			8-34			1045-301B			5-53	1	
X1728	6225-6605-599-6259		8-9	1		1045-307C			3-27	1	
X1730	6225-6605-599-6266		2-5	1		1045-308	6225-6605-346-1313		3-65	2	
X1731	6225-6605-599-6263		8-17	2		1045-310	6225-5305-341-8834		3-43	2	
			8-27			1045-312C	6225-6605-373-9239		3-20	2	
X30	5305-297-2173		2-12	10		1045-317E			3-39	2	
			4-43			1045-328			5-9	1	
			10-21			1045-331B	6225-6605-564-9422		5-54	3	
			12-21			1045-342B	6225-6605-509-7939		5-46	1	
X403-1			10-22	1		1045-345D			5-40	1	
X4406-1-1			4-19	2		1045-346C			5-42	1	
X4800-9-2			12-53	2		1045-349B	6225-6605-342-0765		5-49	1	
X5100-126-1			3-50	2		1045-350C	6225-6605-334-7279		3-7	1	
			5-41			1045-351	6225-6650-443-2827		3-8	1	
X5100-54-1			3-44	3		1045-352B	6225-6205-329-0691		6-2	1	
			4-31			1045-354C	6225-5305-298-8410		3-17	2	
			5-48			1045-36C			13-5	2	
X5100-98-1			7-1	5		1045-361B	6225-5310-090-0548		3-29	2	
			9-51			1045-364B			3-57	4	
			13-8			1045-367	6225-6605-536-5122		5-56	3	
X5200-2-1	6325-5305-525-6007		8-11	2		1045-37B	6225-5310-443-2834		13-4	17	
X775	6225-5315-664-8313		12-47	2		1045-371B	6225-6605-598-6567		3-6	1	
			13-1			1045-372C	6225-6605-527-1245		3-24	1	
1045-104	6325-5310-090-0558		3-26	4		1045-409			13-16	1	
			3-47			1045-411	6225-5310-095-8118		10-28	AR	
			3-53			1045-439B			4-51	4	
			4-6			1045-58			12-14	1	
1045-109-1			11-15	3		1045-59			12-9	1	
			11-17			1045-6	6225-6605-697-1412		13-17	1	
			11-20			1045-60	6225-6605-634-6930		12-8	1	
1045-110	6225-6605-090-5314		11-43	1		1045-71			10-3	1	
1045-111	6225-6605-090-5315		11-49	1		1045-80	6225-6605-536-5123		11-42	1	
1045-113B			12-16	1		1045-909	6225-6605-346-1317		9-18	1	
1045-115			10-2	2		1045-917C	6225-6605-346-1318		11-18	1	
			10-4			1045-918	6225-6605-443-2856		11-16	1	
1045-123	6225-6605-090-5322		10-33	1		1045-919			11-22	1	
1045-138			10-30	1		1045-93			11-21	1	
1045-143	6225-5305-095-8104		10-27	3		1045-964B	6225-6650-323-8116		5-8	2	
1045-145	6225-6605-329-0687		10-24	2					5-19		
1045-146C	6225-6605-321-3637		10-23	1		1045-97			11-26	1	
1045-15C	6225-6605-304-6984		12-41	2		1045-970C	R6650-323-8117-WK01		4-13	1	
1045-161B	6225-6605-096-2635		8-20	2		1045-971			4-7	1	
			9-48			1045-972B			4-16	1	
1045-17C	6225-6605-092-7437		7-2	1		1045-978C	6225-6605-329-0695		4-22	1	
1045-18C	R6605-373-9231-WK01		7-11	AR		1045-980B	6225-6605-342-0767		5-57	1	
			12-46			1045-983			5-58	1	
1045-18C1	6225-6605-099-0131		12-42	1		1045-985B			3-33	1	
1045-18C2	6325-5310-637-3176		6-10	2		1045-988B	6225-6605-342-0768		3-48	1	
			6-15			1045-991B			5-45	1	

PART NUMBER	STOCK NO.		FIG. AND INDEX NO.	QTY. PER ART.	SOURCE CODE	PART NUMBER	STOCK NO.		FIG. AND INDEX NO.	QTY. PER ART.	SOURCE CODE
	CLASS CODE	SERIAL OR PART NO.					CLASS CODE	SERIAL OR PART NO.			
1045-992	6225-6605-346-1336		5-43	1		1471B988C			3-42	1	
1046-42	6325-5305-443-2863		10-17	1					5-21	Ref	
1287-48			9-41	7		1471B990B	6225-6650-323-8149		5-28	1	
			10-29			1471B991B	R6650-323-8150-WK01		5-36	1	
1289C42-3			6-14	1		1471B997	6605-630-0481		3-18	1	
1416-10B	6225-6605-517-1485		7-14	1					5-62	Ref	
1416-11C	6225-6605-317-1950		7-15	1		1471B998B	6225-6605-323-8152		5-37	1	
1416-17			7-23	1		1471C1C			9-59	1	
1416-18			7-21	1		1471C10			12-44	1	
1416-19C	6225-6605-307-6897		7-12	1		1471C100			11-80	1	
1416-26	6325-5305-285-8622		8-19	2		1471C20			12-45	1	
1416-27B	6325-5310-639-1457		7-17	AR		1471C22	6225-6605-346-1372		12-60	1	
1416-29B			7-13	AR		1471C23			12-55	1	
1416-30	6325-5305-285-8661		7-20	1		1471C24	6225-6605-509-7949		12-56	1	
1416-902	6225-6605-343-5608		7-16	1		1471C249			4-42	1	
1416D2			7-22	1		1471C25	6225-6605-346-1375		12-57	1	
1416D901	6225-6605-509-7943		7-19	1		1471C255D			4-54	1	
1416D902			7-	1		1471C29			12-59	1	
1416D903			7-25	1		1471C3D			11-40	1	
1426-308B			5-27	1		1471C324	6225-6605-509-7951		8-14	1	
1426-321B	6225-6605-509-7944		3-19	1		1471C410			9-22	1	
1426-323B	6225-6605-346-1340		3-35	1		1471C604	6225-6605-829-9462		6-5	1	
1426-331B	6225-6605-373-9267		5-22	1		1471C609			6-9	1	
1426-332C			3-41	1		1471C611	6225-6605-329-9463		6-4	1	
1426-40C	6225-6605-602-2075		11-10	1		1471C627C			12-58	1	
1426-41			11-5	1		1471C628	6225-6605-346-1377		12-54	2	
1426-48	6225-6650-443-2931		11-9	1		1471C629			12-50	1	
1426-66			8-5A	1		1471C630			9-52	1	
1426-915	6225-6605-096-5825		13-2	1		1471C631			9-55	1	
1426-917	6225-6605-443-2952		11-6	1		1471C635			13-13	1	
1426-977B	6225-6605-099-0133		4-53	1		1471C639			9-8	1	
1426-978D			4-40	1		1471C642	6225-5355-668-4487		9-16	1	
1426-979B	6225-6605-513-5735		5-25	1		1471C643	6225-5330-171-5510		9-17	2	
1426-980B	6225-6650-323-8141		5-24	1		1471C644			9-31	1	
1426-989B	6225-6605-398-0362		5-32	1		1471C645			9-19	1	
1426-992E	6225-6650-323-8142		5-26	1		1471C646	6225-6605-346-1378		9-38	2	
1426-994B	6225-6605-509-7945		3-32	1		1471C647B	6225-6605-670-0874		7-5	1	
1426-996	6225-6650-323-8143		5-29	1		1471C652B	5365-632-3523		11-36	1	
1471-21			12-46	1		1471C653			11-24	1	
1471-250			4-47	1		1471C655			11-34	1	
1471-501	6225-6605-340-1125		12-32	1		1471C656			11-39	1	
1471-924	6225-6605-398-0364		13-8	1		1471C657			11-33	1	
1471B104			5-64	AR		1471C658	6225-5305-207-7871		8-22	1	
1471B104-3	6225-5310-596-0276		3-49	1		1471C66			9-23	1	
1471B137B			10-34	1		1471C706			11-59	1	
1471B144B	6225-6605-373-9282		10-26	2		1471C707	R6605-511-6186-WK01		11-58	1	
1471B15			5-34	1		1471C708B	6225-6605-329-9467		11-57	1	
1471B254	6225-6605-509-7947		4-46	2		1471C709	6225-6605-346-1381		11-56	1	
1471B291B	6225-6605-302-6171		3-51	2		1471C715	6225-5305-207-7254		12-52	2	
			4-32			1471C736			5-31	1	
1471B306			4-29	1		1471C74			11-54	1	
1471B355			3-16	1		1471C75			11-51	1	
1471B356B	6225-6605-346-1352		5-66	1		1471C76B			11-50	1	
1471B360			6-65	1		1471C77	6225-6605-634-6928		11-48	1	
1471B554			13-22	1		1471C79B			11-47	1	
1471B555			13-21	1		1471C902			9-	1	
1471B556			13-19	1		1471C904			8-14	1	
1471B563			13-6	AR					11-	Ref	
1471B78			11-45	1		1471C910	6605-630-0485		9-35	1	
1471B916			11-1	1					13-	Ref	
1471B918			11-8	1		1471C912			9-	1	
1471B920			11-27	1		1471C913			13-15	1	
1471B925			9-39	1		1471C914			13-7	1	
1471B938B			10-35	1		1471C915			11-29	1	
1471B948	6225-6605-302-6172		9-5	1		1471C917			11-37	1	
1471B949			10-	1		1471C927			9-58	1	
1471B956			5-5	1					12-	Ref	
1471B960			3-21	1		1471C930			9-24	1	
			5-1	Ref		1471C939	6225-6605-346-1385		13-12	1	
1471B961			5-20	1		1471C942			9-42	1	
1471B962			5-14	1		1471C955			9-25	1	
1471B963	6225-6605-695-2292		5-3	1		1471C960			4-20	1	
1471B965B			5-15	1		1471C961			4-21	1	
1471B966	6225-6605-346-1360		5-17	1		1471C962			4-	1	
1471B968B	6225-6650-323-8148		5-16	1		1471C963			4-8	1	
1471B970			4-37	1		1471C969			3-30	1	
1471B979	6225-6605-304-6989		3-54	1					4-1	Ref	
1471B981B	6225-6605-638-8447		3-40	1		1471C983			4-44	1	
1471B982B			4-26	1		1471C984B			3-56	1	

Section III  
Numerical Index

T.O. 5N10-4-2-4

PART NUMBER	STOCK NO. SERIAL OR PART NO.		FIG. AND INDEX NO.	QTY. PER ART.	SOURCE CODE	PART NUMBER	STOCK NO. SERIAL OR PART NO.		FIG. AND INDEX NO.	QTY. PER ART.	SOURCE CODE
	CLASS CODE	PART NO.					CLASS CODE	PART NO.			
1471C986			3-8	1		58 19720 0010	6225-6605-346-1478	10-12	1		
			4-41	NP		58 19721 0020		12-5A	1		
1471C989B			3-4	NP		61 30205 0108	6325-5305-579-0303	11-44	1		
			5-38	Ref		61 40105 0416	6325-5305-576-6644	8-4	4		
1471C992	6225-6605-509-7052		5-47	1		61 40105 0620	6325-5305-090-2213	8-15	8		
1471C993B			6-7	1				8-25			
1471C996	6225-6605-329-9469		6-12	1		61 40105 0624	6325-5305-090-2214	8-7	6		
1471C996B	6225-6605-329-9470		6-11	1		61 40105 0644	6325-5305-207-6724	2-2	4		
1471C998	6225-6605-346-1403		8-12	1		61 40112 0116		12-18	4		
			11-	Ref				12-24			
1636-113	6325-5310-332-1743		13-4	6		61 40112 0212		12-27	2		
1820			12-2	2		61 40205 0012	6225-5305-579-0261	7-6	2		
1972-02			2-	1		61 40205 0314		8-13	2		
1972B02			2-	1		61 40205 0318		12-5	9		
1972-21			10-1	1				12-6A			
1972-39			12-38	1		61 40205 0320		8-2	4		
1972-46			12-36	1		61 40205 0416	6225-5305-579-1703	8-31	6		
1972-48			8-3	1		61 40305 0616		2-7	4		
1972-64			10-5	1		61 42805 0216		8-11	2		
1972-906	6225-6605-346-1422		9-2	1		61 70102 0001	6325-5310-630-5003	12-19	4		
1972-907	6225-6605-346-1423		9-15	1				12-25			
			10-	Ref		61 72402 0002	5310-167-0692	12-28	2		
20632			3-31	7		61 72402 0004	5310-167-0694	8-5	4		
			5-2			61 72402 0006	5310-167-0696	2-3	20		
			5-52					2-8			
			11-23					8-8			
			11-25					8-16			
			12-40					8-26			
27 197200 010	6225-6650-587-5068		10-10	1		74 32401 1192		11-46	1		
27 197200 0020	R6605-593-3172-KW01		7-18	1		76 19720 0010		10-7	1		
28 19720 0040	6225-6605-346-1432		11-52	1		79 14711 0101		11-7A	1		
28 19720 0050	6225-6605-346-1433		12-30	1		85 19720 0010		3-37	1		
33578			9-32	1		85 19720 0020		3-1	1		
371-11	6325-5340-282-4971		4-23	1				6-	Ref		
398KN74	6225-5305-214-1435		3-15	2		85 19720 0030	6225-6605-346-1527	9-14	1		
398KN95	6225-5310-209-6822		7-9	1				10-	Ref		
402-30			4-36	AR		85 19720 0040		9-7	1		
45 14160 0010	6225-5305-551-7296		7-4	2				12-	Ref		
45 19720 0010			9-13	1		85 19720 0050	6225-6605-346-1538	12-	Ref		
45 19720 0020			10-6	1		85 19720 0060		8-30	1		
45 19720 0050			12-15	1				11-	Ref		
45 19720 0061			12-1	2		85 19720 0070		8-28	1		
46 19720 0010	6225-6605-346-1447		12-29	1		85 19720 0080		11-	Ref		
46 19720 0020			8-21	1				8-10	1		
46 19720 0060			8-5B	1		85 19720 0090		10-	Ref		
46 19720 0070			8-2A	1		85 19720 0100		10-19	1		
50 14712 0011			12-51	1		85 19720 0110		8-6	1		
50 19720 0010			2-	1		85 19720 0120		10-	Ref		
50 19720 0020	6225-6605-346-1452		10-16	1		85 19720 0130		10-	1		
50 19720 0030			12-39	1		85 19720 0150	6225-6605-346-1549	8-1	1		
50 19720 0062			12-17	1				12-	Ref		
50 19721 0030			2-	1		85 19720 0180		12-37	1		
5103-18W			6-3	1		85 19720 0190		8-33	1		
5138-12			3-28	2		85 19720 0210		12-	Ref		
			9-46			85 19720 0220		2-6	1		
			12-49	1		85 19720 0230		2-9	1		
5133-18C			3-25	11		85 19720 0240		11-41	1		
5133-6			3-46			85 19720 0250		12-	1		
			3-52			85 19720 0260		12-6	1		
			4-5			85 19720 0270		12-6	1		
			5-23			85 19720 0280		13-14	1		
			5-63			85 19720 0290		7-	Ref		
			11-7			85 19720 0300		8-18	1		
			11-14			85 19720 0310		12-	1		
			11-19			85 19720 0320		9-7	1		
52 19720 0020			9-10	1		85 19720 0330		12-	Ref		
52 19720 0031			12-31	1		85 19720 0340		7-	1		
52 19720 0040	6225-6605-346-1453		12-23	1		85 19721 0050		8-33	1		
52 19720 0060			10-36	1				12-	Ref		
52 19720 0070			10-18	1		85 19721 0060		8-28	1		
52 19720 0090	6225-6605-346-1459		10-11	1				11-	Ref		
52 19721 0010			11-47	1		85 19721 0070		12-12	1		
56 19720 0010	6225-6605-346-1462		12-26	1		85 19721 0080		12-11	1		
56 19720 0020	6225-6605-692-9801		12-20	1		865D38	6325-5305-025-8096	12-10	1		
56 19720 0031			11-53	1		865F18	4328-5310-373-9307	5-12	1		
56 19720 0040	6225-6605-346-1464		10-20	1		87 19720 0020		2-1	1		
56 19720 0050	6225-6605-346-1469		10-13	1				13-	Ref		
56 19720 0080			12-13	1		87 19720 0030		8-24	1		
56 19721 0010			12-4	1				13-	Ref		
58 14710 0010			12-33	1		88 19720 0010	6225-6680-659-8762	7-3	1		