

ATLANTIC COAST
PLOTTING SHEET
NEWPORT TO BERMUDA
Primarily for use in ocean sailing

Mercator Projection
Scale: 1:1,058,400 at Lat. 37°
North American Datum of 1983
(World Geodetic System 1984)
Additional information can be obtained at nauticalcharts.noaa.gov.
For Symbols and Abbreviations see Chart No. 1

HEIGHTS
Heights in feet above Mean High Water.
AUTHORITIES
Hydrography and topography by the National Ocean Service, Coast Survey, with additional data from the U.S. Coast Guard and National Geospatial Intelligence Agency.

HORIZONTAL DATUM
The horizontal reference datum of this chart is North American Datum of 1983 (NAD 83), which, for charting purposes, is considered equivalent to the World Geodetic System of 1984 (WGS 84). Geographic positions referred to the North American Datum of 1927 do not require conversion to NAD 83 for plotting on this chart.

NOTE A
Newborn requirements are published in Chapter 2, US Coast Pilot 1, 2, 3 and 4. Additions or revisions to Chapter 2 are published in the Notices to Mariners. Information concerning the regulations may be obtained at the Office of the Commandant, US Coast Guard District of Boston, 50 State Street, Coast Guard District in Portsmouth, VA or at the Office of the District Engineer, Coast of Engineers in Concord, MA. New York, NY or Washington, DC.
Refer to charted regulation section numbers.

SUPPLEMENTAL INFORMATION
Consult National Geospatial-Intelligence Agency pub 147 (Sailing Directions - Caribbean Sea, Vol. 1) and U.S. Coast Pilot 1, 4 for important supplemental information.

CAUTION
This plotting sheet does not have sufficient detail. Certain aids to navigation and wrecks are not shown. Mariners must utilize appropriate nautical charts in conjunction with this plotting sheet to ensure navigational safety. For details contact larger scale NOAA and NSA charts, and USCG and NSA Light Lists.

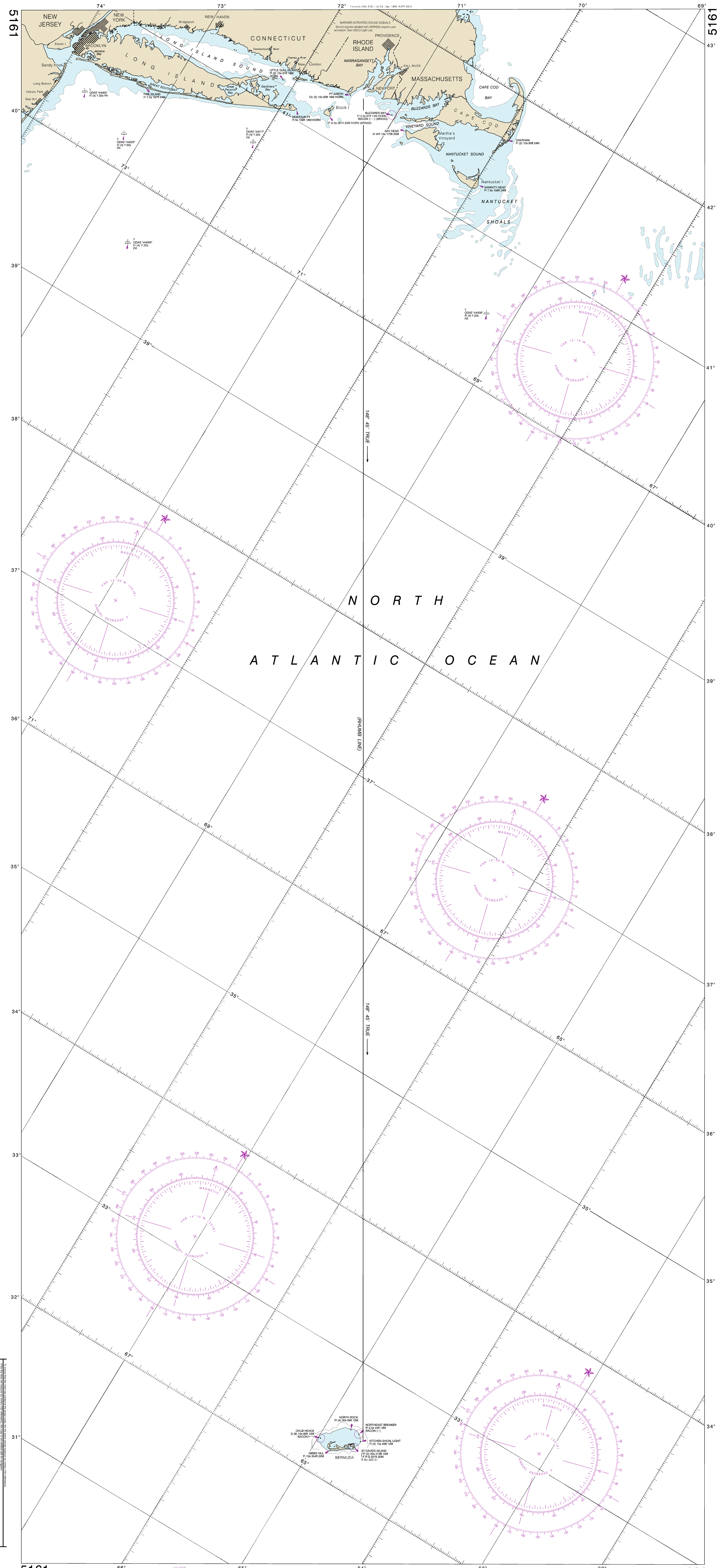
CAUTION
Temporary changes or defects in aids to navigation are not indicated on this chart. See Light Lists for details.
During some winter months or when endangered by ice, certain aids to navigation are removed by other types or removed. For details see U.S. Coast Guard Light List.

RAOAR REFLECTORS
Raadar reflectors have been placed on many navigating aids to navigation. Individual radar reflector identification on these aids has been omitted from this chart.

WARNING
The printed material will not rely solely on any single aid to navigation, particularly on bearing aids. See U.S. Coast Guard Light List and U.S. Coast Pilot for details.

POLLUTION REPORTS
Report all spills of oil and hazardous substances to the National Response Center via 1-800-424-8802 (not toll) or to the nearest U.S. Coast Guard facility. If necessary, communication is imperative. (33 CFR 155)

NOAA encourages users to submit inquiries, discrepancies or comments about this chart at <http://www.nauticalcharts.noaa.gov/contact.htm>.



This chart has been corrected from the Notice to Mariners (NM) published weekly by the National Geospatial Intelligence Agency and the Local Notice to Mariners (LN) issued periodically by the U.S. Coast Guard. Current data to the dates shown in the lower left corner are available at nauticalcharts.noaa.gov.

Published at Washington, D.C.
U.S. DEPARTMENT OF COMMERCE
NATIONAL OCEANOGRAPHIC AND ATMOSPHERIC ADMINISTRATION
NATIONAL OCEAN SERVICE
COAST SURVEY

Newport to Bermuda
SCALE 1:1,058,400

14th Ed., Mar. 2016, Last Correction: 11/28/2018, Cleared through LNM: 0219 (1/8/2019), NM: 0319 (1/19/2019), CHS: 0119 (1/25/2019)

This chart was distributed as a PDF (Portable Document Format) Printing PDF's may alter the chart scale, color, or legibility that may impact suitability for navigation. Printed charts provided by NOAA certified Print on Demand (POD) providers fulfill a vessel's requirement to carry a navigational chart "published by the National Ocean Service" in accordance with federal regulations, including but not limited to 33 C.F.R. 164.23(a), 33 C.F.R. 164.72(b), and 46 C.F.R. 28.225(a). POD charts meet stringent print standards and can be recognized by an official certification of authenticity printed on the regulations. A list of POD providers can be found at: nauticalcharts.noaa.gov/pod