

FLORIDA PALM SHORES TO WEST PALM BEACH



Chart 11472
Published at Washington, D.C.
U.S. DEPARTMENT OF COMMERCE
NATIONAL OCEANIC AND ATMOSPHERIC ADMINISTRATION
COAST SURVEY

NOTE: This chart is not to be used as a substitute for a current edition of the U.S. Coast and Geodetic Survey Sailing Directions (Pilotage and Passage) for the United States and Possessions.

HURRICANE AND TROPICAL STORMS
Hurricanes, tropical storms, and tropical depressions are shown by the symbols on this chart. The symbols are based on the National Hurricane Center's Tropical Weather Outlook (TWO) and the National Hurricane Center's Tropical Storm Report (TSR). The symbols are based on the National Hurricane Center's Tropical Storm Report (TSR) and the National Hurricane Center's Tropical Storm Report (TSR).

ACCOMMODATIONS
The symbols on this chart are based on the National Hurricane Center's Tropical Weather Outlook (TWO) and the National Hurricane Center's Tropical Storm Report (TSR). The symbols are based on the National Hurricane Center's Tropical Storm Report (TSR) and the National Hurricane Center's Tropical Storm Report (TSR).

CAUTION
The symbols on this chart are based on the National Hurricane Center's Tropical Weather Outlook (TWO) and the National Hurricane Center's Tropical Storm Report (TSR). The symbols are based on the National Hurricane Center's Tropical Storm Report (TSR) and the National Hurricane Center's Tropical Storm Report (TSR).

APPROXIMATE
The symbols on this chart are based on the National Hurricane Center's Tropical Weather Outlook (TWO) and the National Hurricane Center's Tropical Storm Report (TSR). The symbols are based on the National Hurricane Center's Tropical Storm Report (TSR) and the National Hurricane Center's Tropical Storm Report (TSR).

CAUTION
The symbols on this chart are based on the National Hurricane Center's Tropical Weather Outlook (TWO) and the National Hurricane Center's Tropical Storm Report (TSR). The symbols are based on the National Hurricane Center's Tropical Storm Report (TSR) and the National Hurricane Center's Tropical Storm Report (TSR).

CAUTION
The symbols on this chart are based on the National Hurricane Center's Tropical Weather Outlook (TWO) and the National Hurricane Center's Tropical Storm Report (TSR). The symbols are based on the National Hurricane Center's Tropical Storm Report (TSR) and the National Hurricane Center's Tropical Storm Report (TSR).

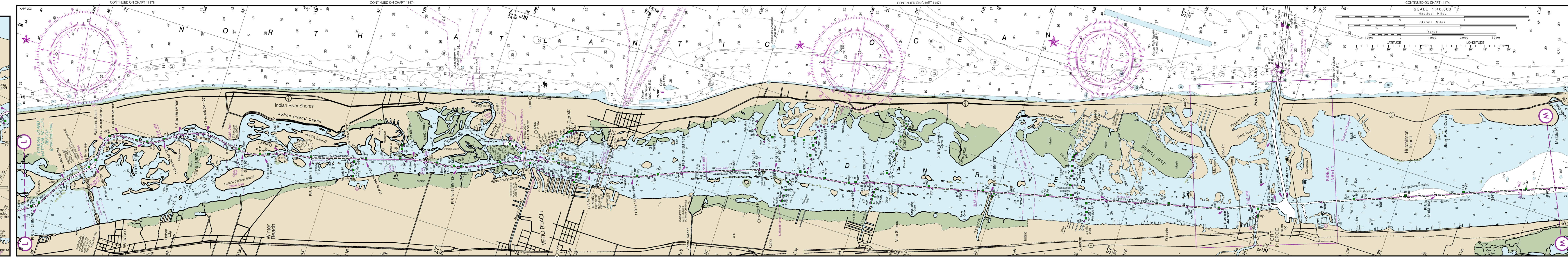
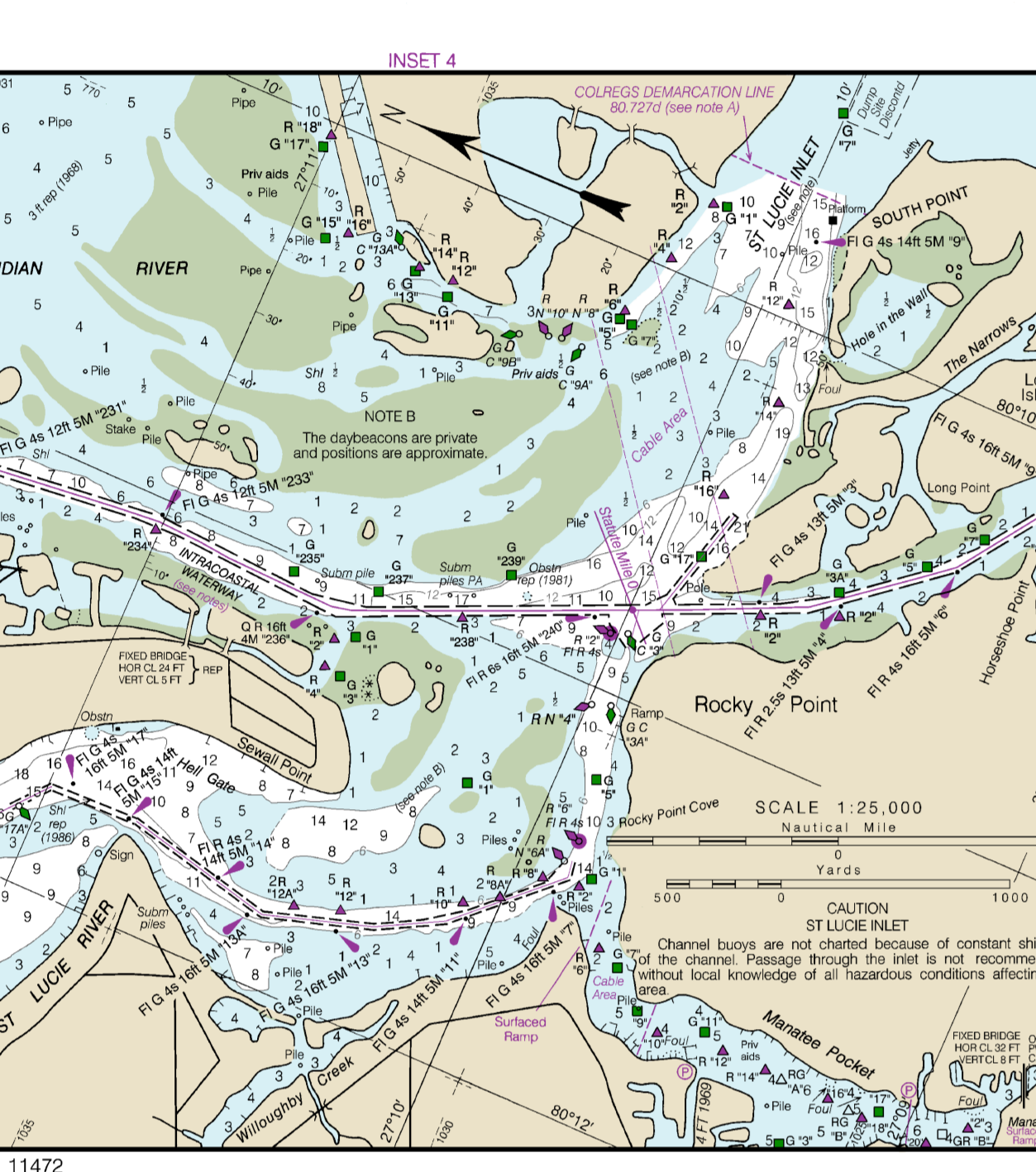
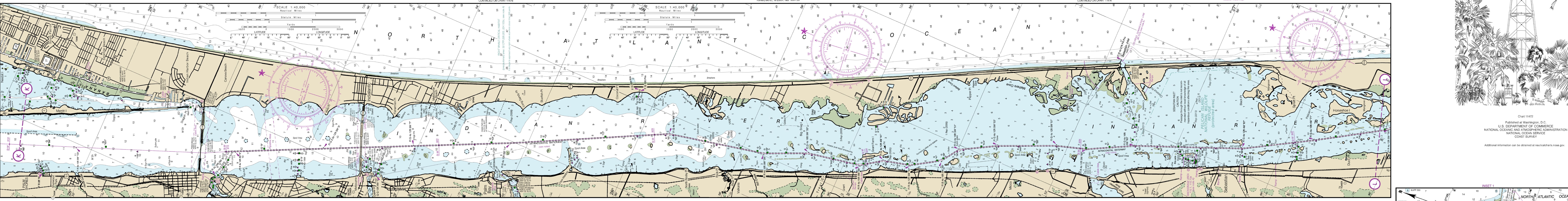
CAUTION
The symbols on this chart are based on the National Hurricane Center's Tropical Weather Outlook (TWO) and the National Hurricane Center's Tropical Storm Report (TSR). The symbols are based on the National Hurricane Center's Tropical Storm Report (TSR) and the National Hurricane Center's Tropical Storm Report (TSR).

CAUTION
The symbols on this chart are based on the National Hurricane Center's Tropical Weather Outlook (TWO) and the National Hurricane Center's Tropical Storm Report (TSR). The symbols are based on the National Hurricane Center's Tropical Storm Report (TSR) and the National Hurricane Center's Tropical Storm Report (TSR).

CAUTION
The symbols on this chart are based on the National Hurricane Center's Tropical Weather Outlook (TWO) and the National Hurricane Center's Tropical Storm Report (TSR). The symbols are based on the National Hurricane Center's Tropical Storm Report (TSR) and the National Hurricane Center's Tropical Storm Report (TSR).

CAUTION
The symbols on this chart are based on the National Hurricane Center's Tropical Weather Outlook (TWO) and the National Hurricane Center's Tropical Storm Report (TSR). The symbols are based on the National Hurricane Center's Tropical Storm Report (TSR) and the National Hurricane Center's Tropical Storm Report (TSR).

CAUTION
The symbols on this chart are based on the National Hurricane Center's Tropical Weather Outlook (TWO) and the National Hurricane Center's Tropical Storm Report (TSR). The symbols are based on the National Hurricane Center's Tropical Storm Report (TSR) and the National Hurricane Center's Tropical Storm Report (TSR).



SAFETY HINTS

1. Keep your chart up to date by adding notices to marine publications you possess.
2. Read notices of changes printed in your chart, such as the Notice to Mariners, before you sail.
3. The information on your chart is the product of your boat.
4. Consult your chart before you depart on any trip.
5. Consult your chart before you depart on any trip.
6. Consult your chart before you depart on any trip.
7. Consult your chart before you depart on any trip.
8. Consult your chart before you depart on any trip.
9. Consult your chart before you depart on any trip.
10. Consult your chart before you depart on any trip.

NAVY WEATHER FORECASTS

CITY	STATION	FREQUENCY	BROADCAST TIME
MIAMI, FL	WPTB 16000	1620.0	0500Z
MARTIN, FL	WPTB 16000	1620.0	0500Z

WEATHER INFORMATION BY WATTS RADIOFISHERY

CITY	STATION	FREQUENCY	BROADCAST TIME
MIAMI, FL	WPTB 16000	1620.0	0500Z
MARTIN, FL	WPTB 16000	1620.0	0500Z

RAVENS (RESCUE AND VESSEL) SERVICE

CITY	STATION	FREQUENCY	BROADCAST TIME
MIAMI, FL	WPTB 16000	1620.0	0500Z
MARTIN, FL	WPTB 16000	1620.0	0500Z

PUBLIC BOATING RESTRICTION PROGRAM

This program is designed to reduce the impact of recreational boating on the environment. It requires boaters to obtain a permit before launching their boats in certain areas.

CAUTION

Boaters should be aware of the restrictions and follow the rules to avoid penalties.

NAVY COORDINATE GRID

The chart uses a coordinate grid for navigation purposes. The grid is based on the North Atlantic Ocean and Indian River Lagoon area.

