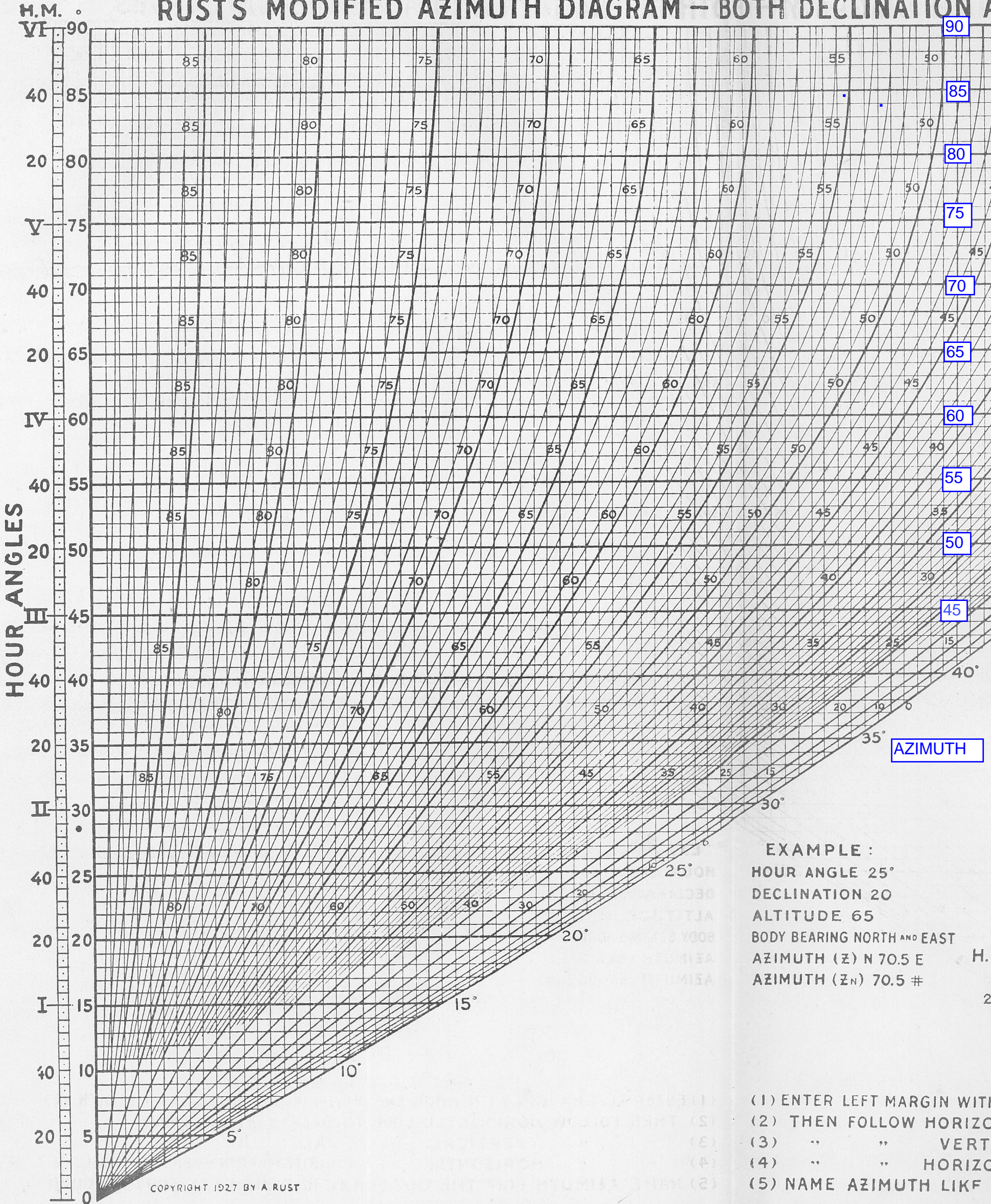


RUST'S MODIFIED AZIMUTH DIAGRAM - BOTH DECLINATION AND ALTITUDE



COPYRIGHT 1927 BY A RUST

EXAMPLE :
 HOUR ANGLE 25°
 DECLINATION 20
 ALTITUDE 65
 BODY BEARING NORTH AND EAST
 AZIMUTH (Z) N 70.5 E
 AZIMUTH (Z_N) 70.5 #

- (1) ENTER LEFT MARGIN WITH
- (2) THEN FOLLOW HORIZO
- (3) " " VERT
- (4) " " HORIZO
- (5) NAME AZIMUTH LIKF